



Test Gauge Type 1082, Grade 3A ($\pm 0.25\%$)

- Temperature-compensated movement that significantly reduces temperature error
- MicroSpan™ adjustment for ease in span calibration
- Hydraulically staked movement with Teflon-coated gears and bearings improves stability
- Externally adjustable dial on standard model
- White aluminum dial, black numbers with polished mirror band
- High and low pressure movement stops are standard

The standard Ashcroft® test gauge case style features a solid-front aluminum case with a hinged ring.

The dial has a polished mirror band for pointer reflection to prevent parallax error and is available in 4½", 6" and 8½" dial sizes in both lower and back connection. Pointer is a balanced-friction adjustable design with red knife edge tip for easy reading. The standard test gauge is competitively priced and available from stock for most ranges, tube materials and case sizes.



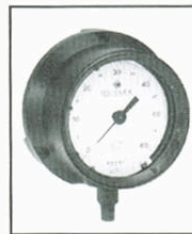
STANDARD RANGES

| Pressure psi | kg/cm ² - bar | kPa |
|-----------------|--------------------------|----------|
| 0/15 | 0/1 | 0/100 |
| 0/30 | 0/1.6 | 0/160 |
| 0/60 | 0/2.5 | 0/250 |
| 0/100 | 0/4 | 0/400 |
| 0/150 | 0/6 | 0/600 |
| 0/200 | 0/10 | 0/1000 |
| 0/300 | 0/16 | 0/1600 |
| 0/400 | 0/25 | 0/2500 |
| 0/600 | 0/40 | 0/4000 |
| 0/800 | 0/60 | 0/6000 |
| 0/1000 | 0/100 | 0/10,000 |
| 0/1500 | 0/160 | 0/16,000 |
| 0/2000 | 0/250 | 0/25,000 |
| 0/3000 | 0/400 | 0/40,000 |
| 0/5000 | 0/600 | 0/60,000 |
| 0/10,000 | | |
| Vacuum | | |
| 30" Hg/0 | -1/0 | -100/0 |
| Compound | | |
| 30" Hg/15 psi | -1/1.5 | -100/150 |
| 30" Hg/30 psi | -1/3 | -100/300 |
| 30" Hg/60 psi | -1/5 | -100/500 |
| 30" Hg/100 psi | -1/9 | -100/900 |
| 30" Hg/150 psi | | |
| 30" Hg/200 psi | | |
| 30" Hg/300 psi | | |
| 30" Hg/400 psi | | |

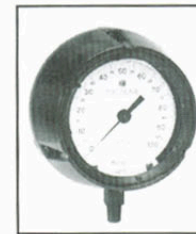
OPTIONAL CASE TYPES



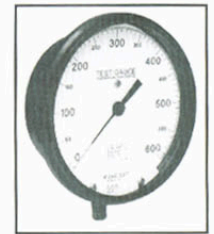
CASE TYPE XAZ
4½" solid-front aluminum, black-epoxy finish, threaded aluminum ring, lower and back connection



CASE TYPE XAY
4½" & 6" solid-front aluminum, black-epoxy finish, black polypropylene ring. Stem, surface or flush mount, lower or back connection



CASE TYPE XTY
4½" solid-front black phenolic, black polypropylene ring. Stem, surface or flush mount, lower or back connection



CASE TYPE XQY
6" solid-front black, glass reinforced polypropylene, black polypropylene ring. Stem, surface or flush mount, lower or back connection

BOURDON SYSTEM SELECTION

| Ordering Code | Bourdon Tube & Tip Material ⁽¹⁾ (all joints TIG welded except "A") | Socket Material | Tube Type | Range Selection Limits (psi) | NPT Conn. ⁽²⁾ |
|---------------|--|-----------------|-----------|------------------------------|--------------------------|
| A | Grade A Phosphor Bronze Tube-Brass Tip, Silver Brazed | Brass | C-Tube | Vac/400 psi | ¼ |
| P | K Monel | Monel 400 | (3) | Vac/10,000 psi | ¼ |

(1) For selection of the correct bourdon system material, see the media application table on page 172.

(2) Optional connection available: ½ NPT

(3) Vac through 1,500 psi-C-Tube

2000 through 10,000 psi-Helical

See page 166 for optional test gauge carrying case and handle.

TO ORDER THIS 1082 TEST GAUGE:

Select:

1. Dial size—4½", 6", 8½" _____ **45** **1082** **PS** **02L** **0/2000 psi**
2. Case type—1082 _____
3. Bourdon system selection ordering code _____
4. Connection size—¼ (02) _____
5. Connection location—Lower (L), Back (B) _____
6. Standard pressure range—2000 psi _____

(*) "S" denotes solid-front case design