

APPLICATION NOTE

Measuring current on a CT secondary circuit

In some cases, measuring actual current on the primary conductor is not possible and the user may have to measure current on the secondary circuit of a CT. In this case, the MPQ can be programmed to display the actual primary current values instead of the current measured on the CT secondary circuit. This is done by following the steps given below.

1. When creating an advanced setup file, go to the column circled in Figure 1.

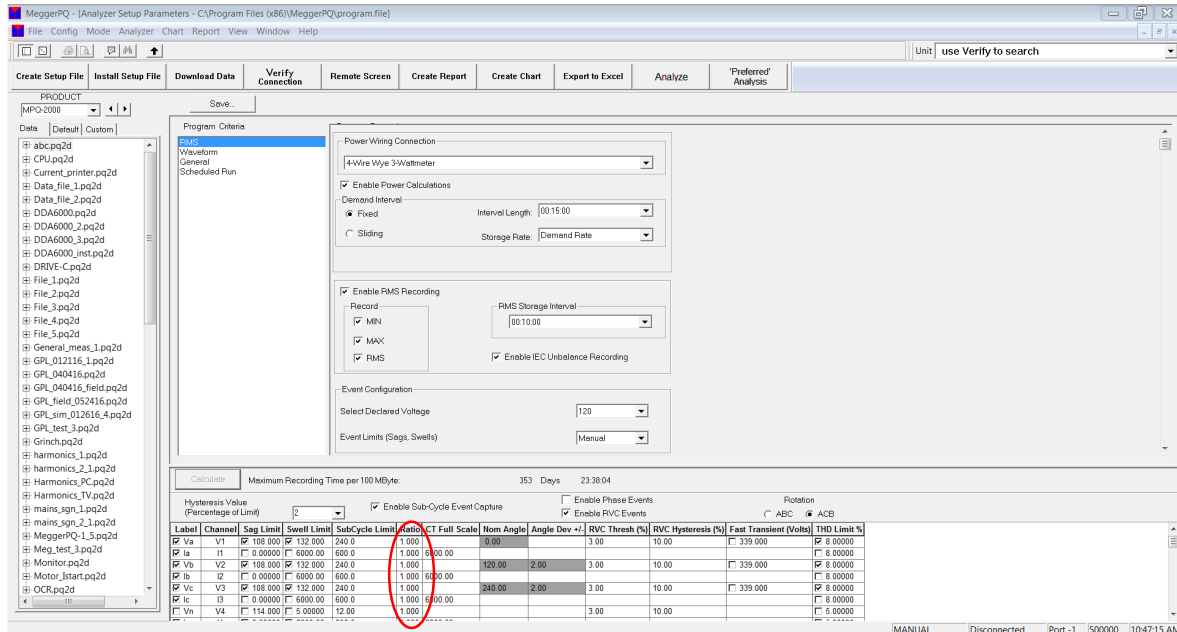


Figure 1: MeggerPQ software - Advanced Test Setup screen

2. Click on the cells corresponding to the current channels and change the values to the ratio of the CTs, the secondary circuits of which you're measuring the current on. For example, if you're measuring current on the secondary circuit of a 600:5 CT, you'll enter a ratio of 120 for current in the column circled in Figure 1.

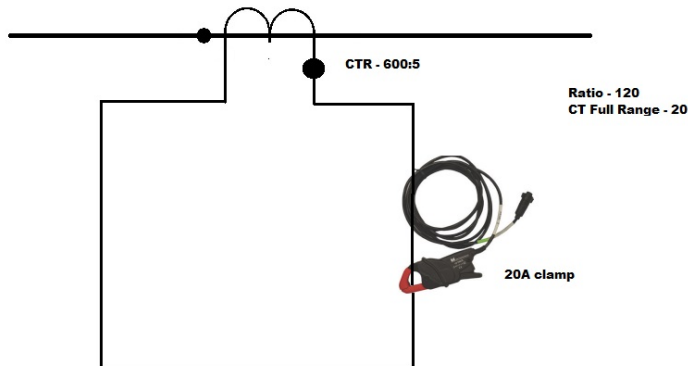


Figure 2: Connection diagram