

HiTemp140X2-FP

High Temperature Dual Probe Data Loggers with Two Remote Temperature Probes

The HiTemp140X2-FP series of dual probe high temperature data loggers are comprised of a stainless steel data logger body and offers four sizes (6 inch, 12 inch, 36 inch and 72 inch) of flexible FP probes or are available with one flexible probe and a stainless steel bendable PT probe combination. The dual probes of this HiTemp140X2 series allow for simultaneous temperature monitoring and provide flexibility in applications such as oven mapping, surface temperature monitoring, autoclave validation and sterilization processes.

The HiTemp140X2-FP model offers lightweight, flexible RTD probes coated with PFA insulation. The FP probe design allows the probe to be easily maneuvered and is ideal for temperature monitoring inside test tubes, small vials, and other delicate applications. The narrow thermistor probe tip is compatible for use with the MicroDisc probe attachment allowing for precise surface temperature monitoring of shelving and more.

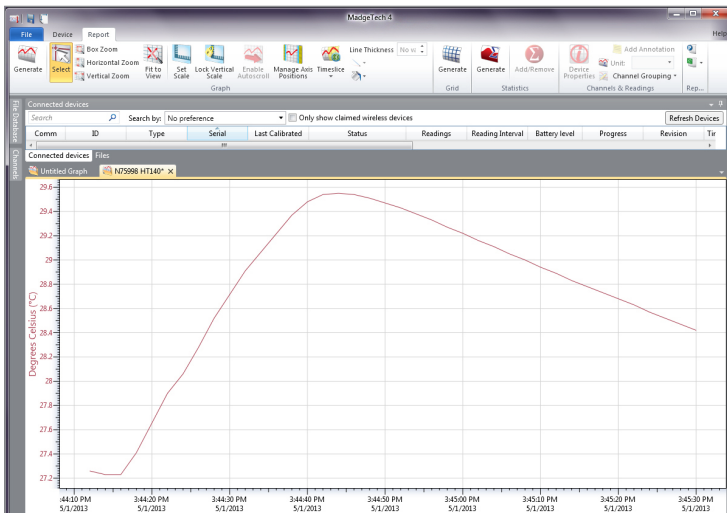
Using the latest MadgeTech Software, starting, stopping and downloading the HiTemp140X2-FP is simple and easy. To use, simply place the HiTemp140X2-FP in the IFC400 or IFC406 docking station (sold separately). Using the software, an immediate or delay start can be chosen, as well as the reading rate. Start the data logger, remove it from the docking station and the device is ready to be deployed. Graphical, tabular and summary data is provided for analysis and data can be viewed in °C, °F, K or °R. The data can also be automatically exported to Excel® for further calculations.



Features

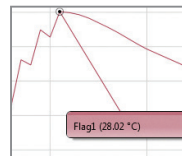
- ±0.1 °C (±0.18 °F) Accuracy
- Flexible Probe Measures from -60 °C to +260 °C (-76 °F to +500 °F)
- Bendable Probe Measures from -200 °C to +350 °C (-328 °F to +662 °F)
- Submersible (IP68)
- User Replaceable Battery
- Trigger Settings
- Programmable Start and Stop Time
- Battery life indicator

MadgeTech 4 Software Features

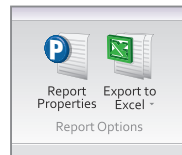


Graph View

- Multiple graph overlay
- Statistics
- Digital calibration
- Zoom in/ zoom out
- Lethality equations (F0, PU)
- Mean Kinetic Temperature
- Full time zone support
- Data annotation
- Min./Max./Average lines
- Summary view



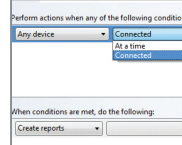
Cooling Flags



Export to Excel

| Time | Time Zone | Delta | |
|------|------------|-------|-----------|
| 1 | 5:33:37 PM | 0400 | -00:00:00 |
| 2 | 5:33:37 PM | 0400 | -00:00:00 |
| 3 | 5:33:37 PM | 0400 | -00:00:20 |
| 4 | 5:33:37 PM | 0400 | -00:00:50 |
| 5 | 5:33:37 PM | 0400 | -00:01:40 |
| 6 | 5:33:37 PM | 0400 | -00:02:50 |
| 7 | 5:33:37 PM | 0400 | -00:03:50 |
| 8 | 5:33:37 PM | 0400 | -00:04:40 |
| 9 | 5:33:37 PM | 0400 | -00:05:50 |
| 10 | 5:33:37 PM | 0400 | -00:06:40 |
| 11 | 5:33:37 PM | 0400 | -00:07:50 |
| 12 | 5:33:37 PM | 0400 | -00:08:20 |
| 13 | 5:33:37 PM | 0400 | -00:09:00 |
| 14 | 5:33:37 PM | 0400 | -00:10:00 |
| 15 | 5:33:37 PM | 0400 | -00:11:00 |
| 16 | 5:33:37 PM | 0400 | -00:12:00 |

Tabular Data View



Automation

Benefits

- Simple Setup and Installation
- Minimal Long-Term Maintenance
- Long-Term Field Deployment

Applications

- Autoclave Verification
- Implement HACCP Programs
- Food Preparation and Processing
- Environmental Studies
- Well Monitoring
- Washer Disinfectors
- Pasteurization

SPECIFICATIONS

Specifications are subject to change without notice. Specific warranty remedy limitations apply. Call (603) 456-2011 or go to madgetech.com for details.

| TEMPERATURE | |
|-------------------------|--|
| Temperature Sensor | HiTemp140X 2- FP: Flexible RTD Probe HiTemp140X 2- FP- PT: Flexible RTD Probe and Bendable RTD Probe |
| Probe Measurement Range | Flexible Probe: -60 °C to +260 °C (-76 °F to +500 °F) Bendable Probe: -200 °C to +350 °C (-328 °F to +662 °F) |
| Temperature Resolution | 0.01 °C (0.02 °F) |
| Calibrated Accuracy | ±0.1 °C (0.18 °F) |

| GENERAL | |
|-----------------------------------|---|
| Start Modes | Software programmable immediate start Delay start up to 18 months in advance |
| Stop Modes | Manual or Timed (specific date and time) |
| Trigger Settings | High and Low limits may be set. Once data meets or exceed sets limits, the device will record to memory. Bi-level start and stop triggers can also be programmed. Users can specify the number of readings to take after the device triggers. <i>(Triggering on channel #1 only)</i> |
| Readings in Trigger Settings Mode | 16,383 readings |
| Real Time Recording | May be used with PC to monitor and record data in real time |
| Password Protection | An optional password may be programmed into the device to restrict access to configuration options. Data may be read out without the password |
| Memory | 32,767 readings |
| Wrap Around | Yes |
| Reading Rate | 1 reading every second up to 1 reading every 24 hours |
| Calibration | Digital calibration through software |
| Calibration Date | Automatically recorded within device |
| Battery Type | 3.6V high-temperature lithium battery included; user replaceable |
| Battery Life | 1 year typical (1 minute reading rate at 25 °C/ 77 °F) |

| | |
|--------------------------------|--|
| Data Format | Date and time stamped °C, K, °F or °R |
| Time Accuracy | ±1 minute/month at 25 °C (77 °F) Extended Operation: ±20 minutes/month at 140 °C (±450 ppm) |
| Computer Interface | IFC400 OR IFC406 USB docking station required; 125,000 baud |
| Operating System Compatibility | Windows XP SP3 or later |
| Software Compatibility | MadgeTech Standard Software version 4.2.1.0 or later MadgeTech Secure Software version 4.2.0.0 or later |
| Operating Environment | -40 °C to +140 °C (-40 °F to +284 °F) 0 %RH to 100 %RH, 0.002 PSIA to 60 PSIA |
| IP Rating | IP68 |
| Dimensions (Body) | 1.89 in x 0.97 in x 0.97 in (48 mm x 24.6 mm x 24.6 mm) |
| Dimensions (Probe) | HiTemp140X2-FP: Flexible Probe: 6 in x 0.10 in (152 mm x 2.5 mm) Flexible Probe: 12 in x 0.10 in (305 mm x 2.5 mm) Flexible Probe: 36 in x 0.10 in (914.4 mm x 2.5 mm) Flexible Probe: 72 in x 0.10 in (1829 mm x 2.5 mm) HiTemp140X2-FP-PT 1 Inch Bendable Probe: Probe tip: 1.7 in x 0.125 in dia. (42 mm x 3.2 mm dia.) Bendable portion: 22 in x 0.062 in dia. (559 mm x 1.6 mm dia.) HiTemp140X2-FP-PT 5 Inch Bendable Probe: Probe tip: 4.8 in x 0.125 in dia. with 1 in x 0.188 in dia. handle (121 mm x 3.2 mm dia. with 25 mm x 4.8 mm dia. handle) Bendable portion: 22 in x 0.062 in dia. (559 mm x 1.6 mm dia.) |
| Weight | HiTemp140X2-FP: 4.1 oz (115 g) HiTemp140X2-FP-PT: 3.9 oz (110 g) |
| Material | Body: 316 Stainless Steel, PEEK Bendable Probe: 316 Stainless Steel Flexible Probe: PFA Insulated Cable |
| Approvals | CE |

BATTERY WARNING: FIRE, EXPLOSION, AND SEVERE BURN HAZARD. DO NOT SHORT CIRCUIT, CHARGE, FORCE OVER DISCHARGE, CRUSH, PENETRATE, OR INCINERATE. BATTERY MAY LEAK OR EXPLODE IF HEATED ABOVE 150 °C (302 °F).

Notice: Steam Sterilization Applications

The pervasive nature of pressurized steam creates a very difficult environment for electronics. Please refer to the following preventative maintenance procedure when using this device in steam sterilization applications. Additionally, this device is not ideal for steam sterilization applications above 121 °C/1.1 bar.

Ordering Information

| | | |
|------------------------|--------------|---|
| HITEMP140X2-FP-6 | PN 902071-00 | High Temperature dual probe data logger with two 6 inch flexible probes |
| HITEMP140X2-FP-12 | PN 902008-00 | High Temperature dual probe data logger with two 12 inch flexible probes |
| HITEMP140X2-FP-24 | PN 902023-00 | High Temperature dual probe data logger with two 24 inch flexible probes |
| HITEMP140X2-FP-36 | PN 900265-00 | High Temperature dual probe data logger with two 36 inch flexible probes |
| HITEMP140X2-FP-72 | PN 900271-00 | High Temperature dual probe data logger with two 72 inch flexible probes |
| HITEMP140X2-FP-6-FP-12 | PN 902070-00 | High Temperature dual probe data logger with a 6 inch flexible probe and 12 inch flexible probe |
| HITEMP140X2-FP-6-FP-36 | PN 901894-00 | High Temperature dual probe data logger with a 6 inch flexible probe and 36 inch flexible probe |
| HITEMP140X2-FP-12-PT-1 | PN 902022-00 | High Temperature dual probe data logger with a 12 inch flexible probe and 24 inch bendable probe with a 1 inch piercing tip |
| HITEMP140X2-FP-36-PT-1 | PN 900267-00 | High Temperature dual probe data logger with a 36 inch flexible probe and 24 inch bendable probe with a 1 inch piercing tip |
| HITEMP140X2-FP-72-PT-1 | PN 900273-00 | High Temperature dual probe data logger with a 72 inch flexible probe and 24 inch bendable probe with a 1 inch piercing tip |
| HITEMP140X2-FP-36-PT-5 | PN 900269-00 | High Temperature dual probe data logger with a 36 inch flexible probe and 24 inch bendable probe with a 5 inch piercing tip |
| HITEMP140X2-FP-72-PT-5 | PN 900275-00 | High Temperature dual probe data logger with a 72 inch flexible probe and 24 inch bendable probe with a 5 inch piercing tip |
| IFC400 | PN 900319-00 | Docking station with USB cable |
| IFC406 | PN 900325-00 | 6 Port, Multiplexer docking station with USB cable |
| ER14250MR-145 | PN 900097-00 | Replacement battery for the HiTemp140X2-FP |

PREVENTATIVE MAINTENANCE

After every 3 hours of steam exposure:

1. Remove the endcap and battery from the device (ref. battery change procedure on Product User Guide)
2. Place open logger (minus battery) in an oven at 120 °C (250 °F) for a minimum of 30 minutes
3. Remove logger from oven and allow to cool to room temperature
4. Re-assemble the logger with the battery (note polarity) and endcap

For Quantity Discounts call (603) 456-2011 or email sales@madgetech.com