

# LogTag<sup>®</sup>UTREL30-WiFi

## Quick Start Guide

Version B - April 2022

[www.logtag.com](http://www.logtag.com)

# Quickstart Guide Contents

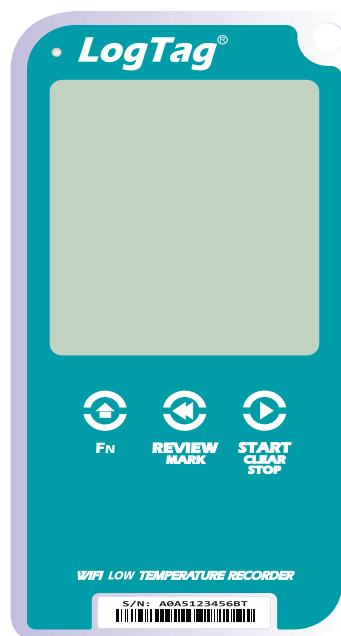
---

What's Included	3
Battery Installation	4
Downloading LogTag Analyzer	5
Running the Connection Wizard	7
Connecting to your WiFi Network	10
Configuring your UTREL30-WiFi	13
Installing the Wall Mount	14
Starting your UTREL30-WiFi	15
LogTag Online	16

# What's Included

---

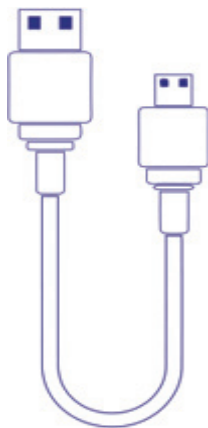
Please check you have the items shown below before continuing with setting up your UTREL30-WiFi.



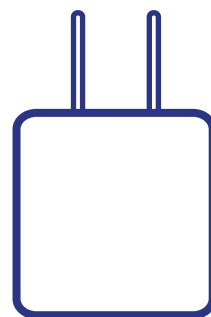
UTREL30-WiFi



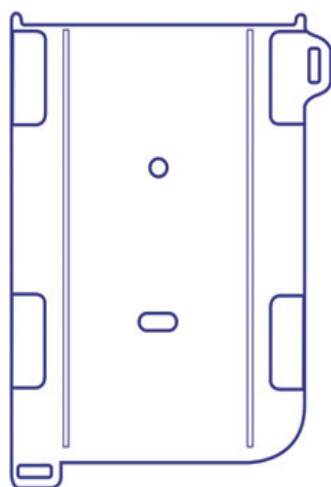
ST10 External Probe  
(Not included)



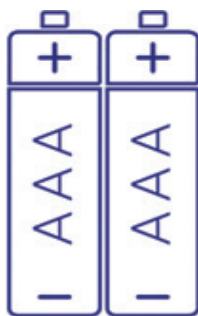
USB Cable



AC Adapter  
(US and EU adapter only)



Wall mount  
(Not included)



2x AAA Battery  
(Not included)



Glycol Buffer  
(Not included)

# Battery Installation

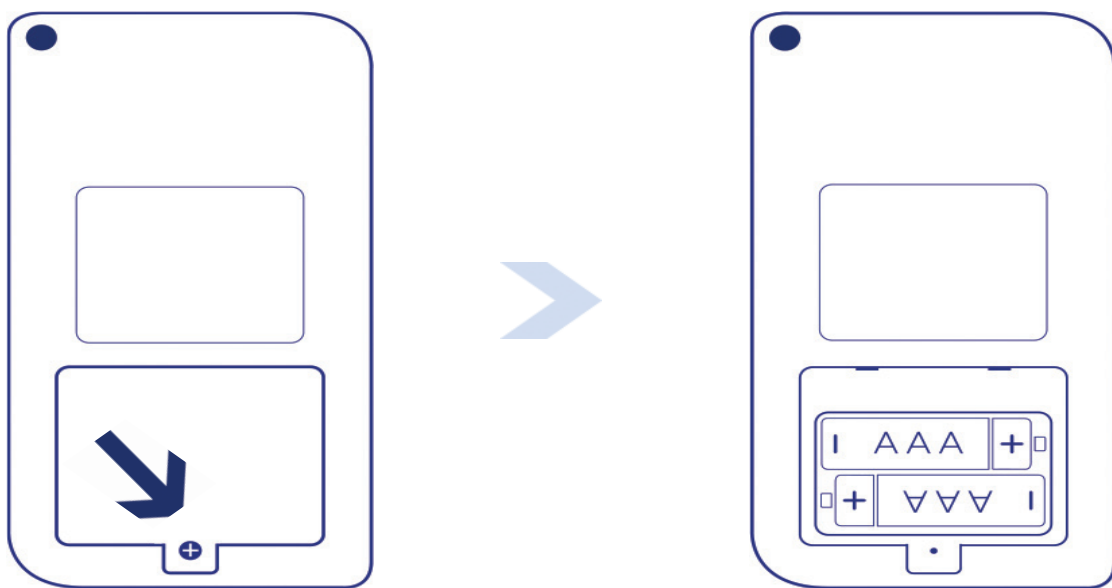
---



The USB cable is the main power method to power the UTREL30-WiFi unit permanently via the USB socket.

AAA batteries are another backup power source to ensure your device continues to record in the event of a power outage or is unplugged.

1. You will need a small Phillips (cross-shaped) screwdriver to remove the cover on the back of the UTREL30-WiFi case.



2. Once you have removed the battery cover, install the two AAA batteries. **Take note** of the direction each battery must be installed.
3. Once both batteries are securely installed, **replace the battery cover** and secure via the screw provided.

# Battery Installation

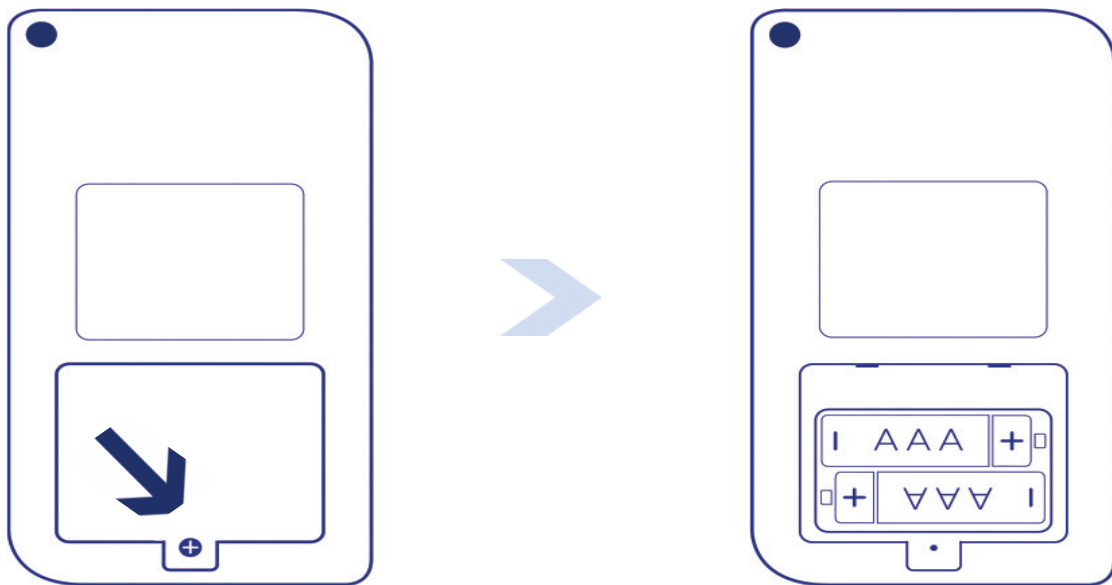
---



The USB cable is the main power method to power the UTREL30-WiFi unit permanently via the USB socket.

AAA batteries are another backup power source to ensure your device continues to record in the event of a power outage or is unplugged.

1. You will need a small Phillips (cross-shaped) screwdriver to remove the cover on the back of the UTREL30-WiFi case.



2. Once you have removed the battery cover, install the two AAA batteries. **Take note** of the direction each battery must be installed.
3. Once both batteries are securely installed, **replace the battery cover** and secure via the screw provided.

# Running the Connection Wizard

---

Open LogTag Analyzer and select 'Connection Wizard' from the 'LogTag Online' menu.

Please ensure there is internet connection on your computer prior to starting this process.

The first page of the Wizard will be displayed. When you're ready to begin, click "**Start**".



You will be asked to sign in to your LogTag Online account. If you do not have an account, click the link

# Running the Connection Wizard continued...

---

below or alternatively, open your browser, type the following link into the address bar and follow the on-screen instructions.

<https://logtagonline.com/signup>

or click **Create a LogTag Online Account** link.

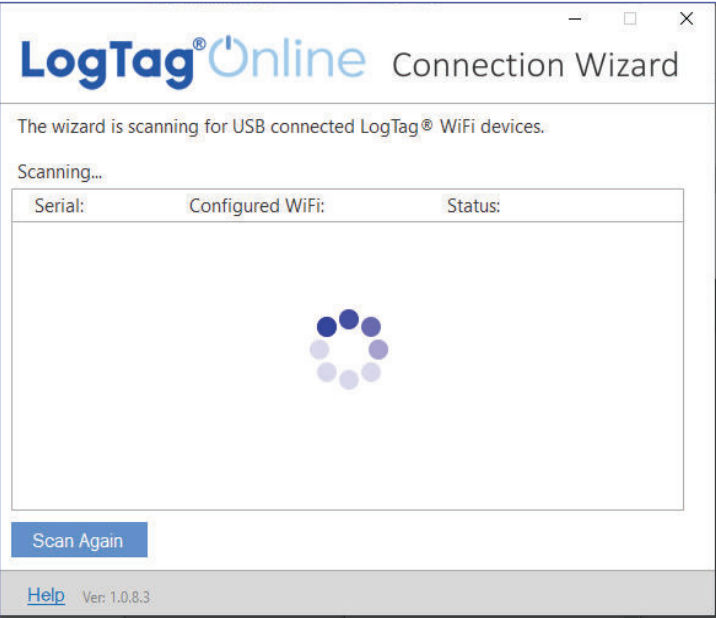
The image shows a screenshot of a web browser window titled "LogTag®Online Connection Wizard". The window has a white background with a blue header bar containing the "LogTag®Online" logo and the title "Connection Wizard". Below the header, there is a paragraph of text: "Sign in to your LogTag®Online Account below and the Wizard will assist in registering your WiFi device(s). If you do not have an account, click 'Create an Account'. Return to this Wizard when your account setup is complete." Below this text are two input fields: "EMAIL" and "PASSWORD", each with a corresponding text box. Below the password field is a link that says "Forgot your Password?". At the bottom of the form area is a link that says "Create a LogTag®Online Account". At the very bottom of the window, there is a grey bar containing a "Help" link, the version number "Ver: 1.0.8.3", and two buttons: "Skip" and "SIGN IN".

**Note:** If you 'Skip' this step, you will need to manually register the device on LogTag Online or repeat the LogTag Online Connection Wizard.

Click 'Sign In' after you have entered your login details to continue setting up WiFi on your UTREL30-WiFi.

# Running the Connection Wizard continued...

You have now created your account and is now ready to set up connection of your UTREL30-WiFi to the WiFi network.



The Wizard will now scan for any connected LogTag devices.

If the scan doesn't find any devices, double-check the device is plugged in to your computer with the USB cable provided and click “Scan Again”.

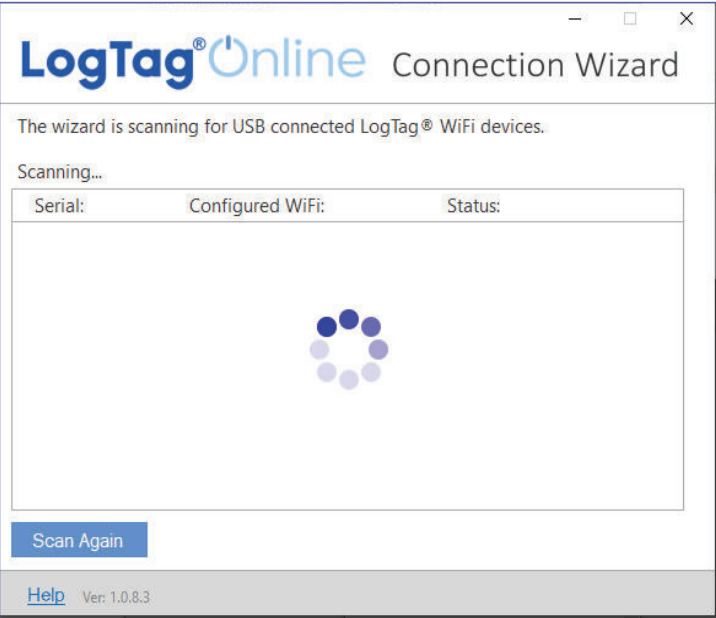
Scanning...		
Serial:	Configured WiFi:	Status:
A0A100003550	LogTag24	Registering

As soon as a device has been identified, it will appear in the table (left) and automatically register that device to your LogTag Online account.



# Running the Connection Wizard continued...

You have now created your account and is now ready to set up connection of your UTREL30-WiFi to the WiFi network.



The Wizard will now scan for any connected LogTag devices.

If the scan doesn't find any devices, double-check the device is plugged in to your computer with the USB cable provided and click “Scan Again”.

Scanning...		
Serial:	Configured WiFi:	Status:
A0A100003550	LogTag24	Registering

As soon as a device has been identified, it will appear in the table (left) and automatically register that device to your LogTag Online account.

The device is now being configured with the WiFi details you provided in the previous screen, which typically takes 10 seconds.

The Connection Wizard is now checking that the UTREL30-WiFi can connect to your WiFi network and to LogTag Online...



Once the Wizard displays “Connection Succeeded”, click “**Close**” to close the Wizard or click the ‘LogTag Online Sign In page’ link to take you to LogTag Online website.

The device is now being configured with the WiFi details you provided in the previous screen, which typically takes 10 seconds.

The Connection Wizard is now checking that the UTREL30-WiFi can connect to your WiFi network and to LogTag Online...



Once the Wizard displays “Connection Succeeded”, click “**Close**” to close the Wizard or click the ‘LogTag Online Sign In page’ link to take you to LogTag Online website.

# Installing the Wall Mount

---

Setup of your UTREL30-WiFi is complete.

Attach the Wall Mount Bracket on the side of your refrigerator or freezer, preferably at eye-level with the adhesive strip provided with the Wall Mount.

Before sticking on the Wall Mount, make sure the sensor cable and the USB cable from the UTREL30-WiFi can both reach the device comfortably without obstruction or at risk of being accidentally disconnected if knocked.

Insert the UTREL30-WiFi into the Wall Mount, connect the USB and sensor cables. The display should show the word “**READY**” as seen in the image (right).

**Note:** both the cloud and WiFi symbols are showing in the top left with a tick in each to confirm successful setup of the device.



# Starting your UTREL30-WiFi

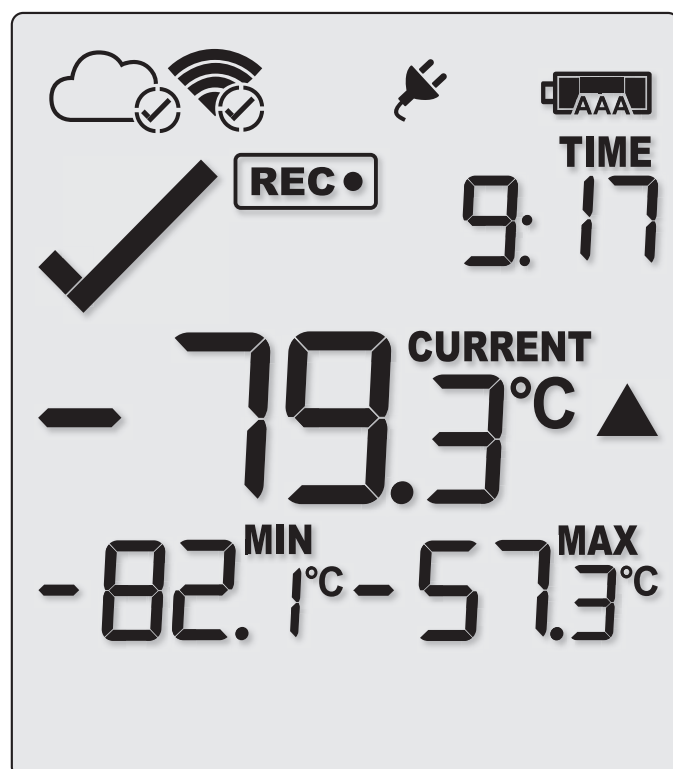
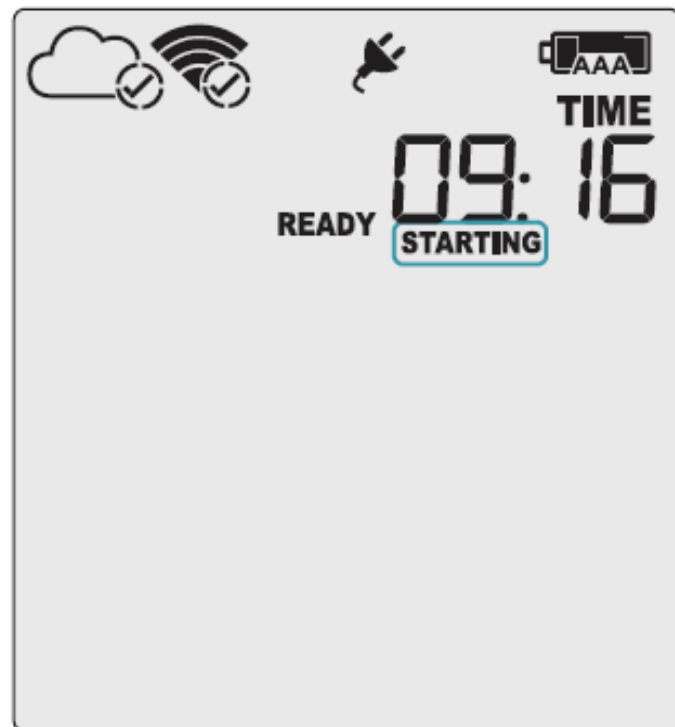
Press and hold the **START/CLEAR/STOP** button.

**STARTING** will appear along with **READY**.

Release the button once **READY** disappears.  
**The UTREL30-WiFi now records temperature data.**

The Logger will **not** start if:

- You release the button before **READY** disappears.
- You keep holding the button for more than 2 seconds after **READY** disappears.
- The backup battery is critically low and the Logger is not connected to power.



# LogTag Online

---

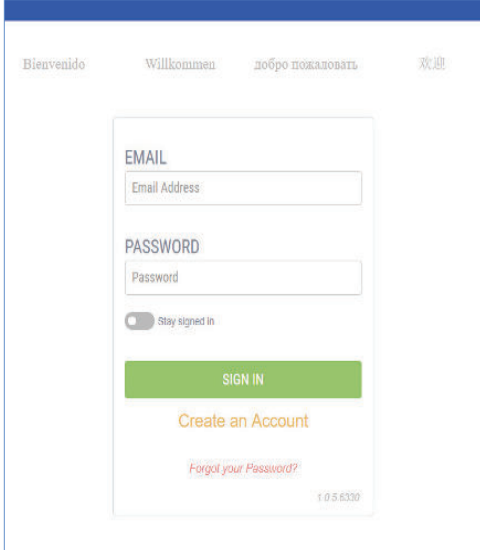
LogTag Online is a secure online service that stores the data recorded from your logger against your account.

## Signing in to your LogTag Online Account

Open your browser and navigate to:  
<https://logtagonline.com>

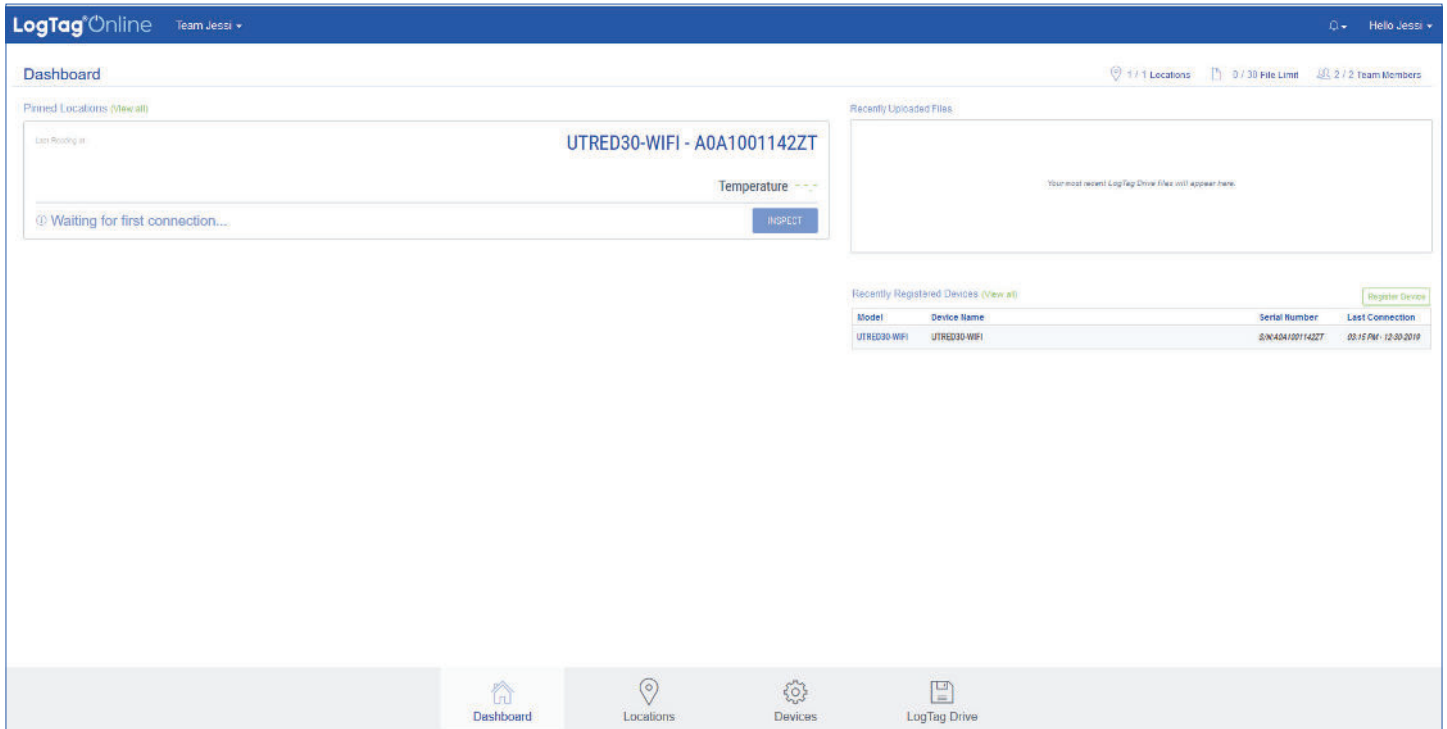
1. Type your Email and Password, then click “Sign In”.

**Note:** If you did not create an account during the Connection Wizard process, click the ‘Create an Account’ link and follow the on-screen instructions.

A screenshot of the LogTag Online login page. At the top, there are four welcome messages in different languages: "Bienvenido", "Willkommen", "добро пожаловать", and "欢迎". Below these, there is a login form with two input fields: "EMAIL" (with a sub-label "Email Address") and "PASSWORD" (with a sub-label "Password"). Below the password field is a "Stay signed in" checkbox. A green "SIGN IN" button is positioned below the form. Underneath the button are two links: "Create an Account" in orange and "Forgot your Password?" in red. At the bottom right of the form area, the version number "1.0.5.6330" is displayed.

Upon signing in, you will see the main Dashboard with the Location automatically created.

If you cannot see the Location, manually register the device by clicking the green ‘Register Device’ button in the ‘Recently Registered Devices’ section of the



main dashboard or select the Devices menu from the bottom navigation bar.

Once the device is registered, the location is automatically created and will appear in Pinned Locations on the Dashboard or in the Locations section in the bottom navigation bar

For more information about registering Devices or Locations, please refer to the ‘Devices’ or ‘Locations’ section in the LogTag Online Quick Start Guide.