

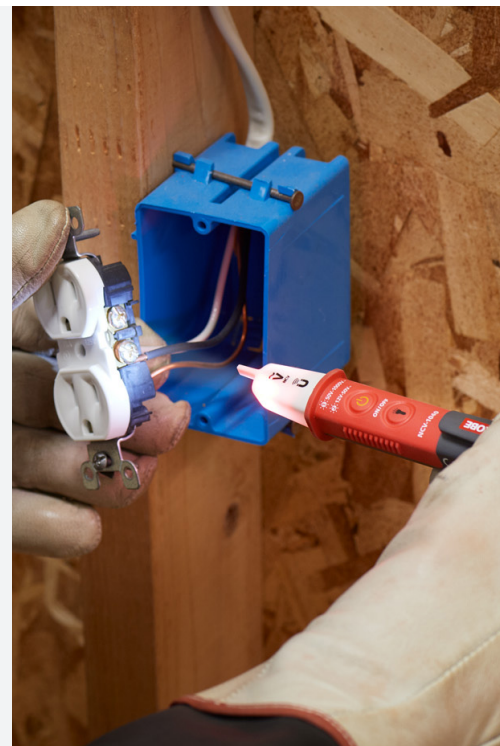
NCV-1020, NCV-1030, NCV-1040 Non-Contact Voltage Probe Series

Check voltage, find cable breaks, identify polarity, magnetic detection

The Amprobe NCV-1000 Non-Contact Voltage (NCV) tester series provides maximum safety and convenience for detecting AC voltage without interrupting electrical systems. Designed to conveniently fit in your shirt pocket, the NCV-1000 series performs in indoor and outdoor settings. Safety tested to the highest category measurement, CAT IV 1000 V, as well as IP65 water and dust resistant, the NCV-1000 series is fit for the toughest industrial applications.



NCV-1000 Series
Non-Contact Voltage Probe



Test wires for AC voltage



Safety Certification

All Amprobe tools, including the Amprobe NCV-1000 Series, are rigorously tested for safety, accuracy, reliability, and ruggedness in our state-of-the-art test lab. In addition, Amprobe products that measure electricity are listed by a 3rd party safety lab, either UL or CSA. This system assures that Amprobe products meet or exceed safety regulations and will perform in a tough, professional environment for many years to come.

Order Information

MODEL	Description	Item #	UPC Code	Dimensions (L x W x H)	Weight	MSRP
NCV-1020	Non-Contact Voltage Probe	4918049	0 95969 85628 7	6.14 x 0.92 x 1.08 in (156.2 x 23.5 x 27.5 mm)	0.12 lb (58 g)	\$14.95
NCV-1030	Non-Contact Voltage Probe	4918051	0 95969 85629 4	6.14 x 0.92 x 1.08 in (156.2 x 23.5 x 27.5 mm)	0.13 lb (60 g)	\$19.95
NCV-1040	Non-Contact Voltage Probe	4918060	0 95969 85630 0	6.14 x 0.92 x 1.08 in (156.2 x 23.5 x 27.5 mm)	0.136 lb (62 g)	\$24.95

Included: 2 x 1.5 V Batteries (installed), User Manual

Features

All models:

- **Voltage detection** from 50 to 1000 V AC
- **Audible (buzzer) and visual (LED) voltage indication**
- **On/Off switch**
- **IP65 rated** water/dust resistant
- **CAT IV 1000 V** safety rated

NCV-1030, NCV-1040 only:

- **Built-in work light**
- **NCV high sensitivity range** (12 V to 50 V AC)
- **Auto power off**
- **Low battery indication**

NCV-1040 only:

- **Magnetic solenoid testing**

Applications

- **Detects the presence of AC voltage** in cables, circuit breakers, wall sockets, junction boxes, fuses, extension cords and more
- **Tests voltage** through wire insulation
- **Identifies cable breaks** in wires, cords and lightning systems connected in series
- **Identifies polarity** (line vs. neutral) of receptacles and cables
- **Safety CAT IV 1000 V** rated for wide range of uses
- **IP65 rated** (water and dust resistant) for indoor and outdoor settings
- **Magnetic solenoid detection** to diagnose electromagnets and relays (NCV-1040 only)