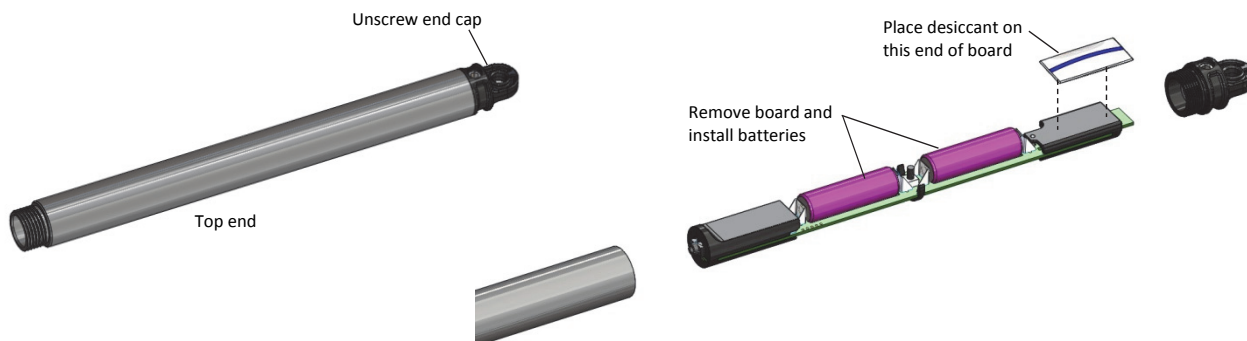


# Quick Start for the HOBO® MX Water Level Logger (MX2001)

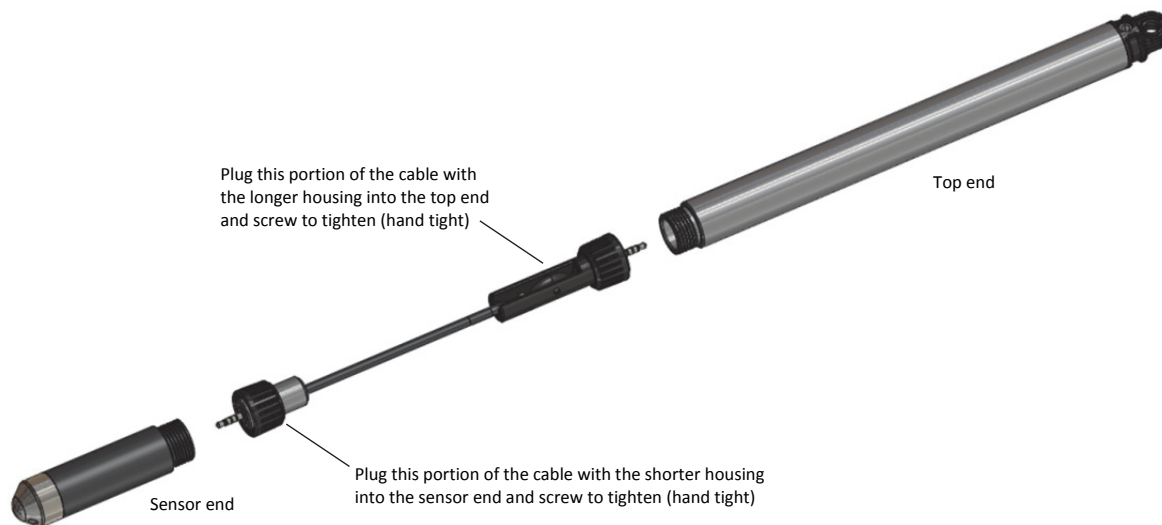
**Before you begin:** After completing steps 1–4, it is recommended that you perform a trial run of steps 5 through 12 before deploying the logger.



**IMPORTANT:** When assembling the logger or attaching the cable, make sure the O-rings and mating housing surfaces are clear of any debris. Any contamination of these surfaces can cause leaks that will lead to logger failure.

- 1 Install the batteries in the top end. Unscrew the end cap and pull out the board. Insert the included two AA batteries observing polarity as shown on the board. Reinsert the board and place the desiccant back on the end of the board as shown. Screw the cap back on until hand tight.



- 2 Connect the top end to the sensor end with the water level logger cable as shown here. The end of the cable with the longer housing connects to the top end as shown below.



- 3  Download on the App Store  ANDROID APP ON Google play Go to the App Store<sup>SM</sup> or Google Play<sup>TM</sup> and download HOBOMobile® to your phone or tablet.

- 4 Open HOBOMobile. Enable Bluetooth® in your device settings if prompted.

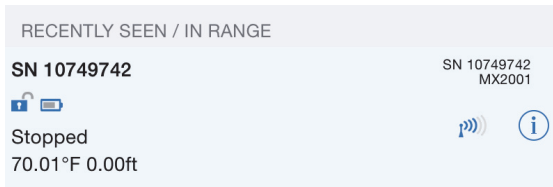
- 5 In HOBOMobile, tap the HOBOs icon at the bottom of the screen. The logger should appear in the Recently Seen/In Range list shown in step 7 (note that the serial number shown in HOBOMobile is for the top end of the logger). If it does not appear in the list, make sure the logger is within range of your device.

- 6 If you are ready to deploy the logger, place it in the deployment location. Refer to the logger manual at [www.onsetcomp.com/manual/mx2001](http://www.onsetcomp.com/manual/mx2001) for deployment guidelines. Otherwise, skip deployment and complete the following steps as a test.

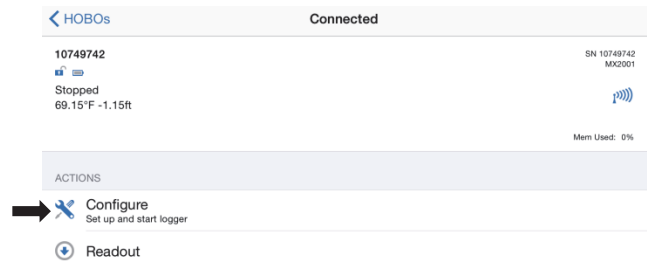
Visit **TRANSCAT.com** >

[sales@transcat.com](mailto:sales@transcat.com) | 800.828.1470

- 7** Tap a row in the Recently Seen/In Range list to connect to the logger.

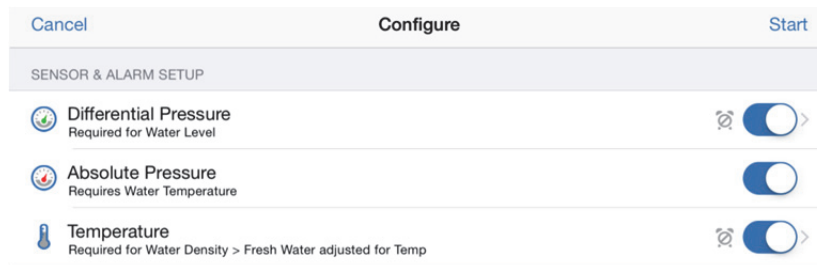


- 8** Once connected, tap Configure to set up the logger.

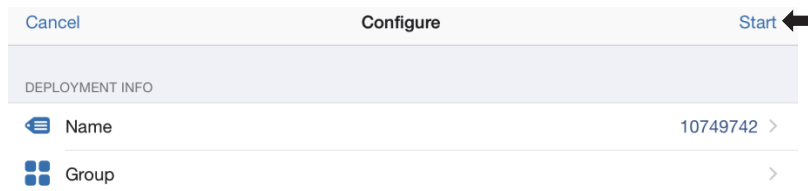


- 9** Set the Reference Water Level and Water Density in the Configure screen.
- Tap Reference Water Level or Water Density and enter the current water level as the reference level in meters or feet. Water levels that are below the reference point should be entered as negative values. The reference water level entered will be associated with a data point taken upon tapping Start (step 11) to determine the correction factor to be used for water level data.
  - Select the water density for the deployment or enter your own value under Manual Input.
  - Tap Done to return to the Configure screen.

- 10** Scroll down in the Configure screen to select the measurement parameters to be logged. Differential pressure must be enabled to calculate water level. Temperature must be enabled to log absolute pressure. Temperature is also required if you selected the water density option "Fresh Water adjusted for Temp."



- 11** Select any other logger settings as desired and then tap Start in the upper right corner of the Configure screen. The logger will begin logging data based on the settings you selected.



- 12** To offload data from the logger to your device, connect to it and tap Readout (shown in example in step 8). The data from the logger is saved to your device.  
Tap the Data Files icon and then tap the mini-graph to view a larger version of the graph or to share the file.



For detailed specifications and information about this logger, refer to the complete product manual. Go to [www.onsetcomp.com/manual/mx2001](http://www.onsetcomp.com/manual/mx2001) or scan the code at left.