

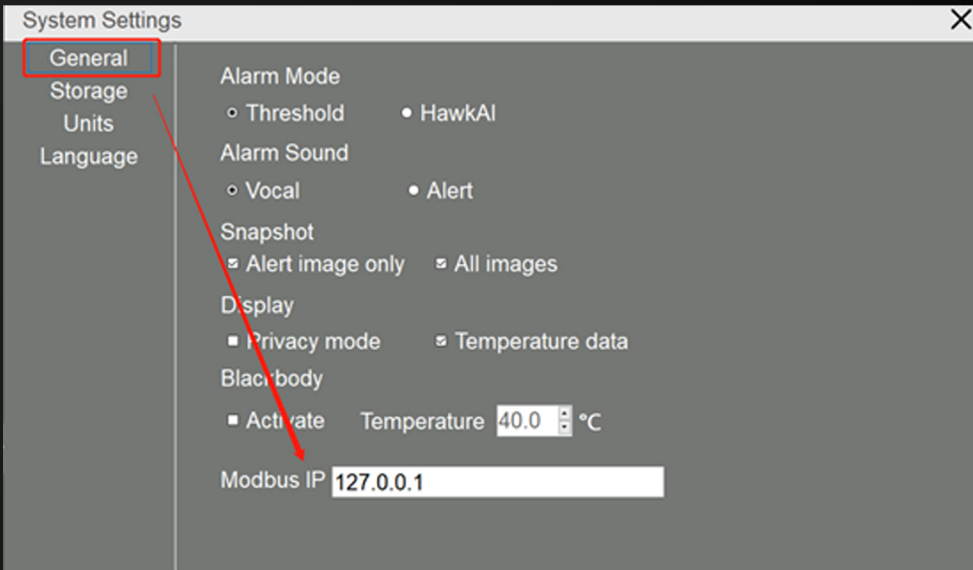
FOTRIC

Modbus Connection Manual



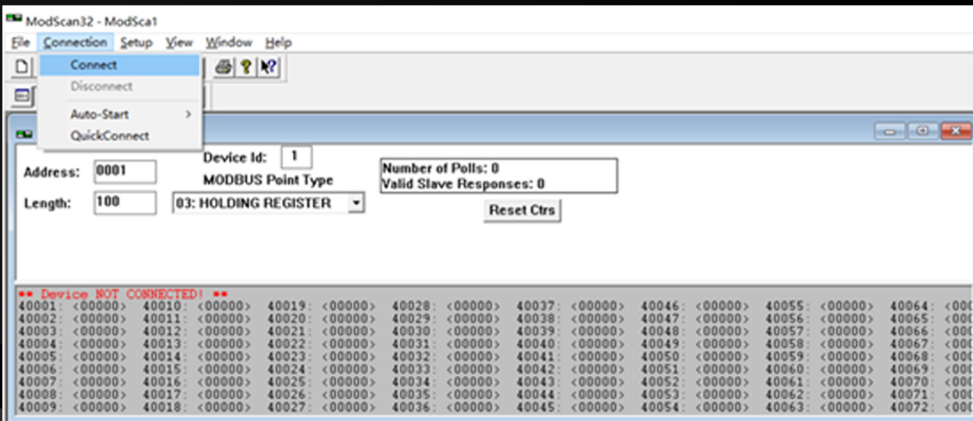
1

Open the WLIR-IR software , click "System Setting" and select "General".
Modbus's IP address is displayed as: 127.0.0.1



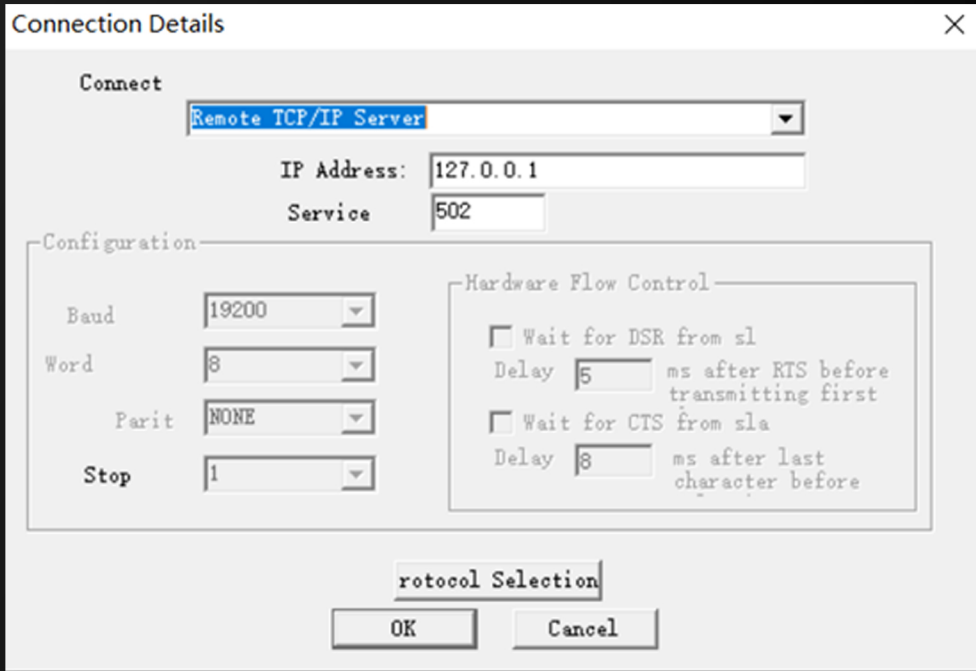
2

Open debugging software "Modscan32",Select "Connection".



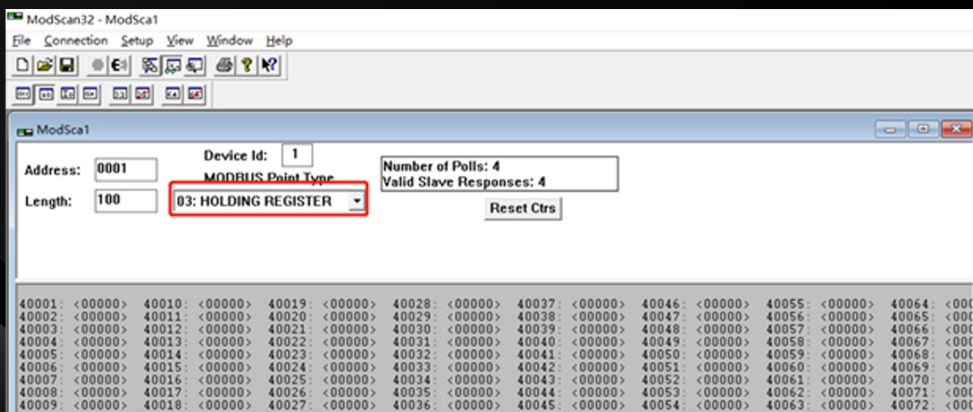
3

The Connection type is "Remote TCP/IP Server", the IP address is 127.0.0.1, Port :502, and click "OK".



4

Select MODBUS Point Type as "HOLDING REGISTER" to obtain the corresponding data.



Examples are as follows:

The data of 40002 represents the cumulative number of people.

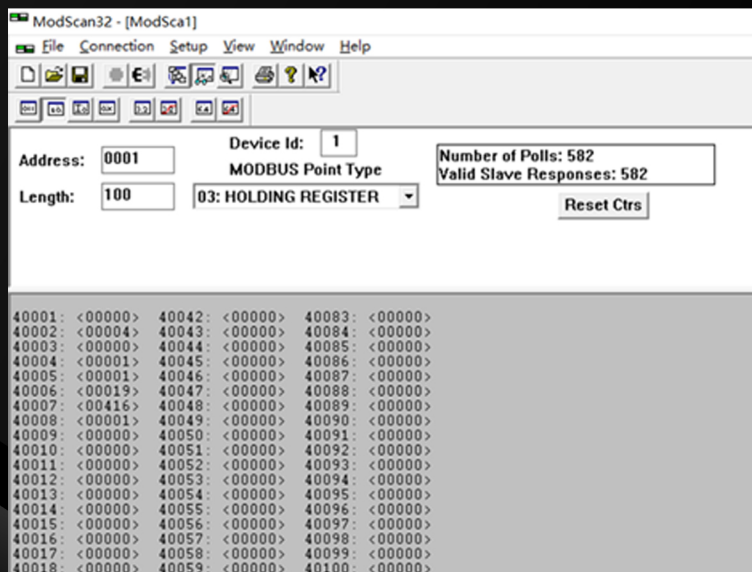
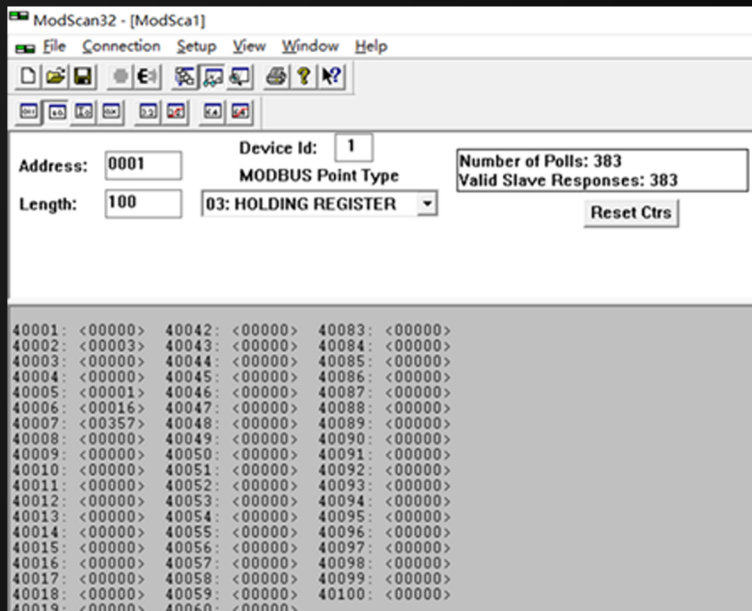
The data of 40004 represents the cumulative number of abnormal people.

The data of 40005 represents the number of faces detected in the current screen.

The data of 40006 represents FaceID.

The data of 40007 is the temperature value of the measured person *10.

If the data of 40008 is 00000, it means that the temperature of the tested person is normal and no alarm is triggered; If it is 00001, it means the temperature of the tested person is abnormal and triggers an alarm.



FOTRIC INC.

www.fotric.com

info@fotric.com