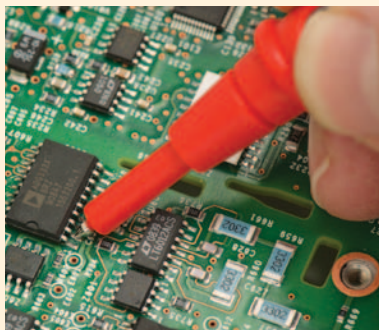


TL175 TwistGuard™ Test Leads



Reduce tip exposure for accurate placement



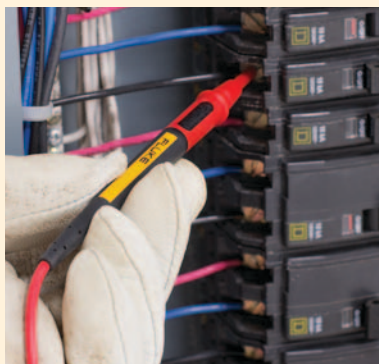
Extreme strain relief tested to withstand over 30,000 bends



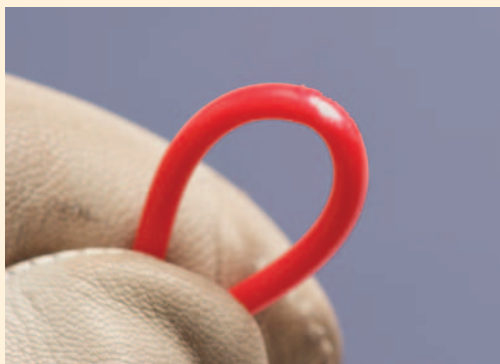
Increase tip exposure for CAT II probing



Universal plugs compatible with all 4 mm shrouded inputs



Reduce tip exposure for CAT III testing



WearGuard™ indicator shows insulation damage

Fluke. *Keeping your world up and running.*®

Fluke Corporation
PO Box 9090, Everett, WA 98206 U.S.A.

Fluke Europe B.V.
PO Box 1186, 5602 BD
Eindhoven, The Netherlands

For more information call:
In the U.S.A. (800) 443-5853 or
Fax (425) 446-5116
In Europe/M-East/Africa +31 (0) 40 2675 200 or
Fax +31 (0) 40 2675 222
In Canada (800)-36-FLUKE or
Fax (905) 890-6866
From other countries +1 (425) 446-5500 or
Fax +1 (425) 446-5116
Web access: <http://www.fluke.com>

©2010, 2011 Fluke Corporation.
Specifications subject to change without notice.
Printed in U.S.A. 3/2011 3860288B D-EN-N

Modification of this document is not permitted without written permission from Fluke Corporation.

Ordering information

Model
TL175 TwistGuard™ Test Leads