

# Field Xpert® SFX350, SFX370

## Rugged Handheld for Mobile Plant Asset Management



# Field Xpert®

Rugged handheld for device commissioning and maintenance in safe and explosion hazardous areas.



Left: Field Xpert SFX350

Right: Field Xpert SFX370 for use in explosion hazardous areas

**Field Xpert** is Endress+Hauser's industrial handheld for efficient configuration and diagnosis of HART® and FOUNDATION™ fieldbus devices operating in explosion hazardous and non-hazardous areas. In addition to being a Field Communicator with a large device driver library, it also can be used for inspection and calibration workflows as well as for managing asset information directly in the field.

- allows efficient device configuration of FOUNDATION fieldbus, HART 5, HART 6, HART 7 and WirelessHART® field devices
- connects to HART and FOUNDATION fieldbus devices via Bluetooth (modem) or WiFi interface (gateway access)
- enables access to advanced field device diagnostics based on NAMUR NE107, allowing users to quickly establish the cause and remedy of error messages
- provides mobile handling of calibration management work orders, with connectivity to CompuCal software solutions
- is easily updated with the latest software and device drivers via Internet

**Field Xpert** simplifies and optimizes commissioning and maintenance workflows:

### Easy and transparent

- Simple device access, optimized device configuration, adaptable configuration templates and clear configuration reports save time during commissioning
- Explicit device documentation saves time during device exchange
- Transparent maintenance, diagnosis and trouble-shooting information increases the safety and availability of the plant
- High resolution full-VGA touchscreen (640x480 Pixel) makes operation simple

### Robust and integrated

- High ingress protection and explosion protection allows Field Xpert to be used in all industries
- Seamless integration of calibration data into calibration management solutions saves time and increases the quality of device calibrations

### Effective and open

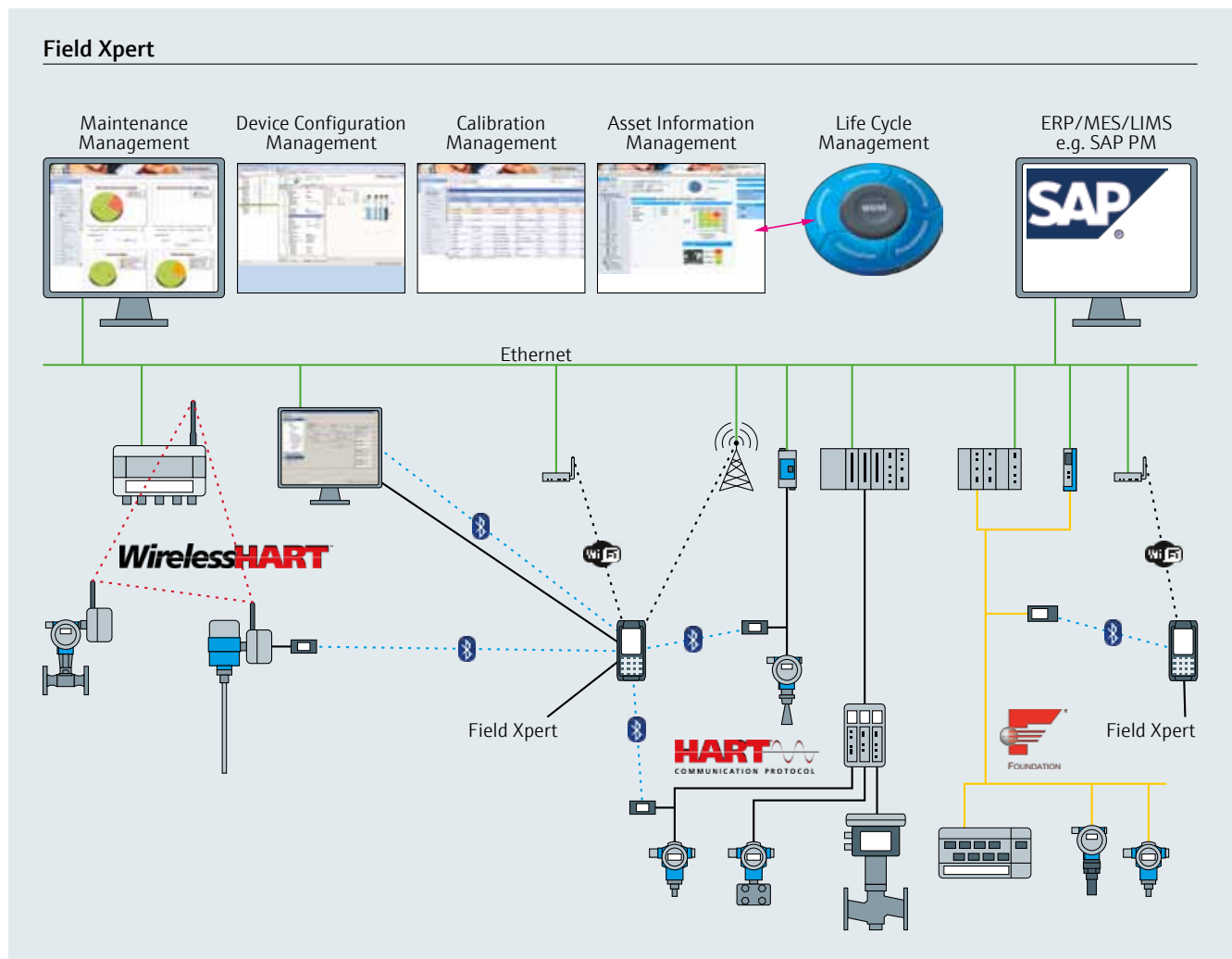
- Mobile phone, camera (send as-is pictures immediately by e-mail), 1D laser scanner (barcode), 2D imager (e.g. data matrix code, QR code) and RFID as standard or option increases labor productivity
- Open, vendor-independent operating system allows additional Asset Management applications to be run

Field Xpert and W@M are registered trademarks of Endress+Hauser Process Solutions AG

Fieldgate is a registered trademark of Endress+Hauser GmbH + Co. KG

FOUNDATION fieldbus is a registered trademark of the Fieldbus Foundation

HART and WirelessHART are registered trademarks of the HART Communication Foundation



**Field Xpert** is a mobile platform for Endress+Hauser's Plant Asset Management applications.

- Device Xpert software covers all aspects of device configuration and reporting. It supports maintenance activities by providing access to advanced field device diagnostics, allowing the user to quickly find the cause and remedy of device malfunctions
- Cal Xpert software provides a mobile solution for calibration management. It optimizes the time and quality of device calibration and follows quality standards for paperless calibration management
- RFID head modules allow Field Xpert functionality to be easily extended. They provide the basis for efficient maintenance and asset inspection tours
- WWAN and telephone ensure quick connection to maintenance experts

## Technical Data Field Xpert

		SFX350	SFX370
Physical characteristics	Weight	approx. 1 lb (450 g)	approx. 2 lbs (950 g) without head module
	Dimensions L x W x D	6.65" x 3.15" x 1.34" (169 x 80 x 34 mm)	8.8" x 3.3" x 2.3" (225 x 85 x 58 mm) without head module
Environmental	Operating temperature	-4°F to +140°F (-20°C to +60°C)	-4°F to +120°F (-20°C to +50°C)
	Storage temperature	-22°F to +158°F (-30°C to +70°C)	-4°F to +140°F (-20°C to +60°C)
	Charging temperature	+41°F to +95°F (+5°C to +35°C)	
	Relative humidity	5% to 95% non-condensing	
	NEMA/IP Class	NEMA Type 4, IP67	NEMA Type 4, IP65
	Drop specification	6 ft (1.8m) to concrete across operating temperature range according to MIL-STD 810G, 8 ft (2.4m) to concrete according to MIL-STD-810G, 2.000 (1m) tumbles according to IEC 60068-2-32 specification	4 ft (1.20 m) across operating temperature range according to MIL-STD-810G
	Electrostatic discharge	+/- 8 KV contact discharge +/- 15 KV air discharge	
Approvals	---	<ul style="list-style-type: none"> <li>■ ATEX (Zone 1) IIC T4</li> <li>■ ATEX (Zone 21) IIIC IP 64</li> <li>■ IECEx (Zone 1) IIC T4</li> <li>■ IECEx (Zone 21) IIIC IP 64</li> <li>■ NEC Class I, Division 1, A-D T4</li> <li>■ NEC Class II, Division 1, E-G T4</li> <li>■ NEC Class III, Division 1 (NEC pending)</li> </ul>	
Explosion protection	None	Intrinsically safe ⓧ II 2G Ex ia IIC T4 Gb IP64 ⓧ II 2D Ex ia IIIC T135°C Db IP6X	

# Device Xpert

Device Xpert configuration software makes Field Xpert an ideal HART and FOUNDATION fieldbus field communicator for industrial applications.

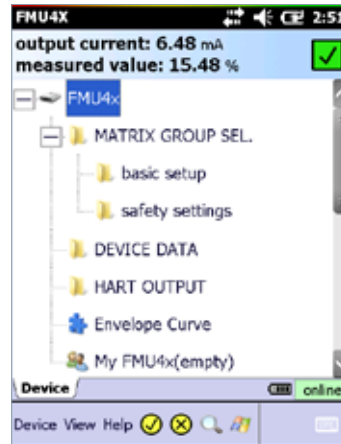
**Device Xpert** configuration software is designed for commissioning and maintaining HART and FOUNDATION fieldbus devices. In combination with Field Xpert, it provides a mobile solution that fulfills the daily requirements of technicians working on site.

Simple navigation to device parameters and functions together with parallel viewing of current device data during editing, speeds up both commissioning and maintenance tasks.

Through the support of special device functions such as the envelope curve provided by Endress+Hauser's time-of-flight level transmitters and automatic downloading of device descriptions (DDs) via Internet or WLAN, Device Xpert ensures flexible and efficient handling of work orders.

NAMUR NE107 diagnosis information give users cause and remedy information, helping them to quickly identify and solve problems.

Device Xpert HART supports Endress+Hauser's Fieldgate® FXA520, allowing Ethernet communication with remote HART field devices. It also supports Endress+Hauser's Fieldgate SFC162, allowing Ethernet communication with remote FOUNDATION fieldbus H1 field devices.



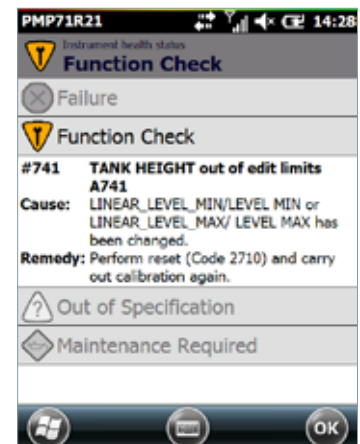
Device Explorer View



Device Parameter View



Envelope Curve

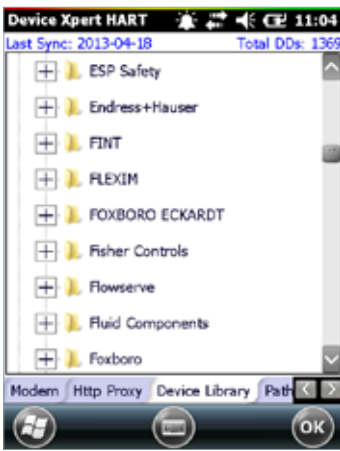


Device Diagnosis (NAMUR NE 107)



# Device Xpert

Device Xpert keeps you up to date.



Device Library View



Device Comparison with Historical Data



Clear Device Reports



Easy Device Configuration

Around 2000 Device Descriptions (DDs) for HART and FOUNDATION fieldbus devices from various manufacturers are included in the on-board Field Xpert library.

With the Software Update Service the library can be kept up to date with the latest HART and FOUNDATION fieldbus Device Descriptions. As soon as they become available, they can be synchronized with Field Xpert via Internet using a WWAN, WLAN, Bluetooth or USB connection. Similarly, new Device Xpert software with updated functionality can be downloaded within a couple of minutes.

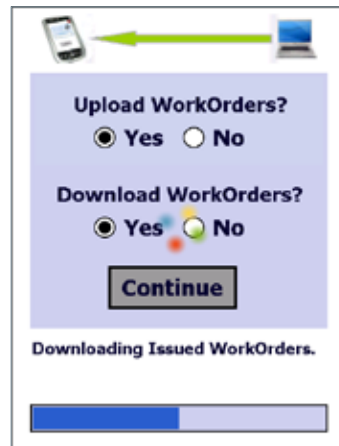
Device Xpert also helps to identify changes made during the life cycle of a field device. The current configuration can be compared to historical data, e.g. the manufacturer's settings or the settings made during the commissioning of the device, changes being highlighted in red.

This together with reports of field device settings and envelope curves help users to easily manage field devices throughout the plant life cycle as well as during device replacement. The device reports can be viewed offline on the Field Xpert itself or with standard tools (web browser) on the associated PC/Laptop.

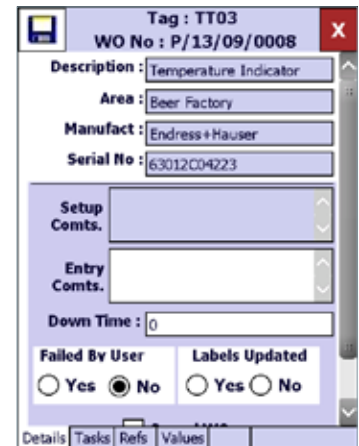
# Cal Xpert

Cal Xpert software supports paperless workflows of calibration tasks.

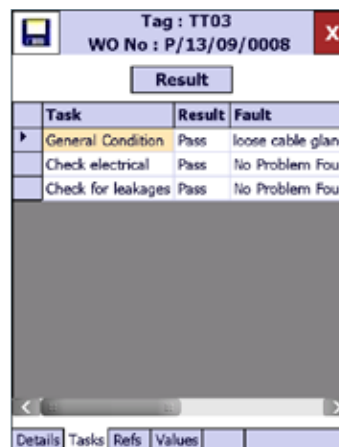
**Cal Xpert** calibration management software is designed to support complete paperless calibration workflows. Users can download issued work orders from a CompuCal calibration management application to the Field Xpert. Field Xpert can then be taken into the field and after the calibration has been made, the documents and/or calibration data can be checked and stored. The results can be uploaded to CompuCal again. From there it may be stored in Endress+Hauser's W@M® database platform and made available to ERP systems, e.g. SAP PM.



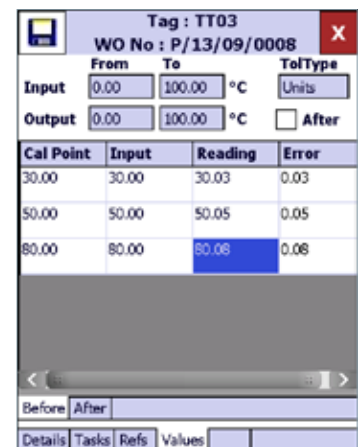
Download Work Orders



Execute Work Order



Execute Inspection Tasks



Enter Calibration Data



For more information:  
[www.us.endress.com/compuCal](http://www.us.endress.com/compuCal)



**USA**

Endress+Hauser, Inc.  
2350 Endress Place  
Greenwood, IN 46143  
Tel: 317-535-7138  
Sales: 888-ENDRESS  
(888-363-7377)  
Service: 800-642-8737  
Fax: 317-535-8498  
[inquiry@us.endress.com](mailto:inquiry@us.endress.com)  
[www.us.endress.com](http://www.us.endress.com)

**Canada**

Endress+Hauser Canada  
1075 Sutton Drive  
Burlington, ON L7L 5Z8  
Tel: 905-681-9292  
800-668-3199  
Fax: 905-681-9444  
[info@ca.endress.com](mailto:info@ca.endress.com)  
[www.ca.endress.com](http://www.ca.endress.com)

**Mexico**

Endress+Hauser México S.A. de C.V.  
Fernando Montes de Oca 21 Edificio A Piso 3  
Frac. Industrial San Nicolás  
54030 Tlalnepantla de Baz  
Estado de México  
México  
Tel: +52 55 5321 2080  
Fax: +52 55 5321 2099  
[eh.mexico@mx.endress.com](mailto:eh.mexico@mx.endress.com)  
[www.mx.endress.com](http://www.mx.endress.com)

**Other locations**

[www.addresses.endress.com](http://www.addresses.endress.com)

CP000145/24/EN/01.13  
(11.2013)