

Leakage Current

LCB-990



FAST



SAFE



RELIABLE



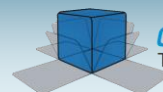
LCB-990

Designed to provide a fast, safe and reliable method of measuring unweighted touch current, touch current weighted for perception or reaction and touch current weighted for let-go. Measures DC and AC currents: calibrated frequency response 20Hz to 1MHz. Designed and built in accordance with IEC 60990:1999 Fig. 3, Fig. 4, and Fig. 5, as well as in accordance with the applicable transfer impedance requirements in IEC 60990.



Features

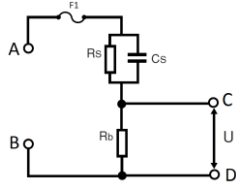
- Provides networks for:
 - IEC 60990:1999 Fig. 3
 - IEC 60990:1999 Fig. 4
 - IEC 60990:1999 Fig. 5
- Portable, lightweight
- Measures 4.5 x 7.4 x 2.4 in.
- No batteries or power required
- Custom test leads available
- Provided with NIST calibration; A2LA calibration available; 20 Hz-1Mhz
- One year warranty





Instrument Configurations

Config 1

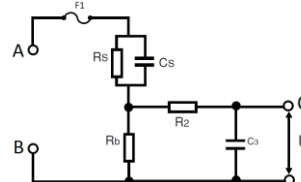


Compliance to:

Config 1:
IEC 60990:1999 Fig. 3
IEC 61010-1:2010 Fig A.3

Config 6:
IEC 61010-1:2010 Fig A.4

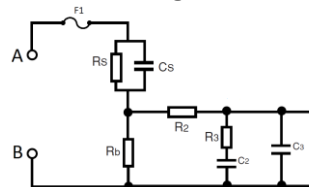
Config 2



Compliance to:

IEC 60990:1999 Fig. 4
IEC 60950-1:2005 Fig. D.1
IEC 61010-1:2010 Fig. A.1
IEC 60335-1: 2012 Cl. 13.2

Config 3



Compliance to:

IEC 60990:1999 Fig. 5



Specifications

Input Voltage Rating:	0-265Vac, 0-300Vdc
Input Current Rating:	100 mAac, 100mAdc (fuse protected)
Frequency Response:	20Hz – 1MHz



Environmental

Operation Temperature:	15 - 40 °C
Relative Humidity Range:	0 - 90 % Non-Condensing



General

Dimensions:	4.5 in. Wide x 7.4 in. High x 2.4 in. Deep
Weight:	4.5 oz (125 gr)
Product Package:	LCB Leakage Current Product Manual Pluggable terminal blocks with input and output test leads NIST Traceable Calibration Certificate to ANSI Z540, 20Hz to 1Mhz

