



Process Gauges

TRANSCAT

▶ Visit us at [Transcat.com!](http://Transcat.com)

35 Vantage Point Drive // Rochester, NY 14624 // Call 1.800.800.5001

New!

Model 656 Open Front Stainless Steel Pressure Gauges

DESCRIPTION

The 656 Series are suitable for corrosive environments in chemical, petrochemical, refining, power, marine, and food and pharmaceutical processing applications. Liquid filled pressure gauges provide users with a number of advantages in certain measurement applications. They are ideally suited for uses on equipment where excessive vibration and pulsation are encountered, such as pumps, compressors, machine tools, etc. The liquid fill minimizes the effect of these severe environments, protects the gauge internals, and provides continuous lubrication on the mechanism, all adding up to extended service life. Liquid filling also provides greater protection of the gauge internals from corrosive atmospheres.

AMETEK liquid filled gauges can be used with a variety of fill fluids including glycerin, mineral oil, and silicone oil. These gauges are available in 63 and 100 mm sizes. Consult your local distributor or U.S. Gauge for availability.



SPECIFICATIONS

ACCURACY

Model 6562 (63 mm): +1.6% of full scale (Grade B)
Model 6566 (100 mm): +1.0% of full scale (Grade 1A)

PRESSURE RANGE

63 mm: 30 inch Hg to 0 psi through 0 to 10,000 psi (0 to 6000 psi on the LBM model)
100 mm: 30 inch Hg to 0 psi through 0 to 23,000 psi

Please refer to Pressure Range Table on page A26 for specific information

WORKING PRESSURE

Steady: 50% of full scale
Over Range Protection: 125% of full scale

WORKING TEMPERATURE

Ambient: -40°F to 140°F (-40°C to 60°C)
Fluid: -4°F to 176°F (-20°C to 80°C)

FILLING LIQUID: Glycerin, silicone, mineral oil

PRESSURE CONNECTION: 316L stainless steel

BOURDON TUBE: 316L stainless steel

Model 6562 (63 mm):
Less than or equal to 800 psi: C type Bourdon tube
Greater than or equal to 1000 psi: Helical type Bourdon tube
Model 6566 (100 mm):
Less than or equal to 1000 psi: C type Bourdon tube
Greater than or equal to 1500 psi: Helical type Bourdon tube

CASE PRESSURE RELIEF

Top: Rubber disc for 63 mm
Back: Rubber disc for 100 mm

CASE AND BEZEL RING: 304 stainless steel; bayonet type

MOVEMENT: 304 stainless steel

WINDOW

63 mm: Polycarbonate (laminated shatter-resistant glass window optional)

100 mm: Laminated shatter-resistant glass window

DIAL: White aluminum with black lettering

POINTER: Aluminum alloy, black painted; contact U.S. Gauge for adjustable pointer on 100 mm

PROCESS CONNECTION: See ordering information page A28

SOLFRUNT 656 Series Liquid Fillable Pressure Gauges

WARNING:

Fill fluids can combine with strong oxidizing agents, including (but not limited to) chlorine, nitric acid, and hydrogen peroxide and result in an explosion which can cause property damage and personal injury. If gauges are to be used in such service, consult factory for other alternatives.

In order to correctly use these gauges, it is recommended that users of pressure gauges become familiar with American National Standard ASME B40.100-1998 entitled "Pressure Gauges and Gauge Attachments." This specification is available from the American Society of Mechanical Engineers, United Engineering Center, 345 East 47th Street, New York, NY 10017



Process Gauges

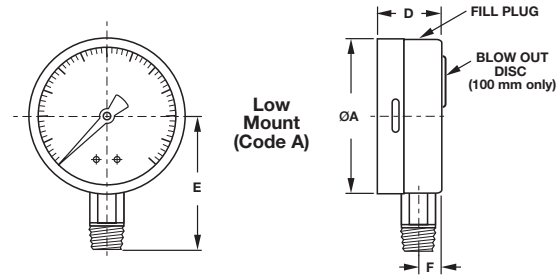
Model 656 Open Front Stainless Steel Pressure Gauges

PRESSURE RANGES

RANGE CODE	See Page A30	psi**
01		30 in. Hg-0
30		30 in. Hg-0-15
31		30 in. Hg-0-30
32		30 in. Hg-0-60
33		30 in. Hg-0-100
34		30 in. Hg-0-150
07		0-15
37		0-30
10		0-60
38		0-100
39		0-160
40		0-200
41		0-300
42		0-400
15		0-600
43		0-800
44		0-1000
17		0-1500
45		0-2000
46		0-3000
49		0-6000
50		0-10,000
22		0-14,500
23*		0-23,000

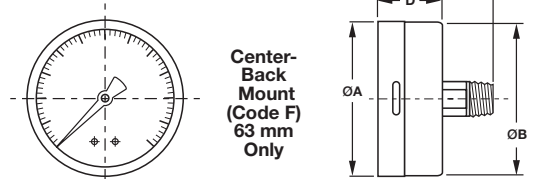
* Not available in 63 mm

**Metric and dual scale dials are available. Please call Customer Service at (863) 534-1504 for more information.

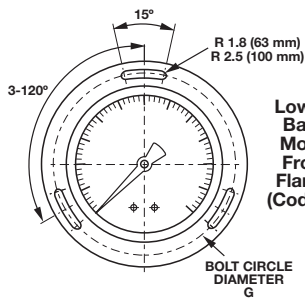


Low Mount (Code A)

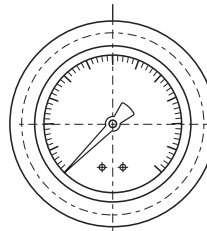
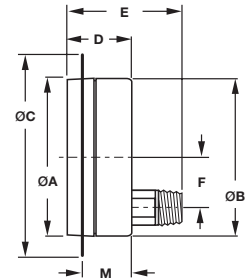
INCHES (MM)



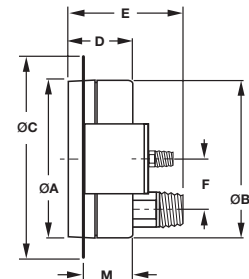
Center-Back Mount (Code F) 63 mm Only



Lower-Back Mount Front Flange (Code N)



Lower-Back Mount U-Clamp Front Flange (Code T) 63 mm Only



63 and 100 mm Pressure Gauges

DIAL SIZE	MOUNTING CODE	UNIT	A	B	C	D	E	F	G	M
63 mm	A	inches	2.51	-	-	1.30	2.15	.44	-	-
	A	mm	63.7	-	-	33.0	55.7	11.0	-	-
63 mm	F	inches	2.51	2.44	-	1.30	2.24	-	-	-
	F	mm	63.7	62.0	-	33.0	57.0	-	-	-
63 mm	N	inches	2.51	2.61	3.39	1.30	2.24	.51	2.95	1.10
	N	mm	63.7	66.2	86.0	33.0	57.0	13.0	75.0	28.0
63 mm	T	inches	2.54	2.64	2.99	1.30	2.24	.51	-	1.10
	T	mm	64.4	67.0	76.0	33.0	57.0	13.0	-	28.0
100 mm	A	inches	3.99	-	-	1.97	3.27	.63	-	-
	A	mm	101.3	-	-	50.0	83.0	16.0	-	-
100 mm	N	inches	3.99	4.06	5.16	1.97	3.27	1.14	4.57	1.77
	N	mm	101.3	103.1	131.0	50.0	83.0	29.0	116.0	45.0

© 2006, by AMETEK, Inc. All rights reserved. PDF606 (160126) Specifications are subject to change without notice. Visit our Web sites for the most up-to-date information.





Process Gauges

Model 656 Open Front Stainless Steel Pressure Gauges

SPEC NUMBER SELECTION CHART

Model 656 (63 mm)		STEM MOUNTING 1/4-18 NPT		
Model Number	6562 Low Mount		6562 Center-Back Mount	
Bourdon Tube	316L Stainless Steel		316L Stainless Steel	
Connection	316L Stainless Steel		316L Stainless Steel	
Range*	Spec No.	Part No.	Spec No.	Part No.
0-30" Hg VAC	256000	-	256024	-
30"-0-15 psi	256001	-	256025	-
30"-0-30 psi	256002	-	256026	-
30"-0-60 psi	256003	-	256027	-
30"-0-100 psi	256004	-	256028	-
30"-0-150 psi	256005	-	256029	-
0-15 psi	256007	-	256031	-
0-30 psi	256008	-	256032	-
0-60 psi	256009	-	256033	-
0-100 psi	256010	-	256034	-
0-160 psi	256011	-	256035	-
0-200 psi	256012	-	256036	-
0-300 psi	256013	-	256037	-
0-400 psi	256014	-	256038	-
0-600 psi	256015	-	256039	-
0-1000 psi	256016	-	256040	-
0-1500 psi	256017	-	256041	-
0-2000 psi	256018	-	256042	-
0-3000 psi	256019	-	256043	-
0-4000 psi	256020	-	256044	-
0-5000 psi	256021	-	256045	-
0-6000 psi	256022	-	256046	-
0-10,000 psi	256023	-	256047	-

* Metric and dual scale dials are available. Please call Customer Service at (863) 534-1504 for more information.



Process Gauges

Model 656 Open Front Stainless Steel Pressure Gauges

SPEC NUMBER SELECTION CHART

Model 656 (63 mm)	FRONT FLANGE PANEL MOUNTING 1/4-18 NPT		U-CLAMP PANEL MOUNTING 1/4-18 NPT	
	Model Number	6562 Low Back Mount	Model Number	6562 Low Back Mount
Bourdon Tube	316L Stainless Steel		316L Stainless Steel	
Connection	316L Stainless Steel		316L Stainless Steel	
Range*	Spec No.	Part No.	Spec No.	Part No.
0 - 30" Hg VAC	256048	-	256072	-
30" - 0 - 15 psi	256049	-	256073	-
30" - 0 - 30 psi	256050	-	256074	-
30" - 0 - 60 psi	256051	-	256075	-
30" - 0 - 100 psi	256052	-	256076	-
30" - 0 - 150 psi	256053	-	256077	-
0 - 15 psi	256055	-	256079	-
0 - 30 psi	256056	-	256080	-
0 - 60 psi	256057	-	256081	-
0 - 100 psi	256058	-	256082	-
0 - 160 psi	256059	-	256083	-
0 - 200 psi	256060	-	256084	-
0 - 300 psi	256061	-	256085	-
0 - 400 psi	256062	-	256086	-
0 - 600 psi	256063	-	256087	-
0 - 1000 psi	256064	-	256088	-
0 - 1500 psi	256065	-	256089	-
0 - 2000 psi	256066	-	256090	-
0 - 3000 psi	256067	-	256091	-
0 - 4000 psi	256068	-	256092	-
0 - 5000 psi	256069	-	256093	-
0 - 6000 psi	256070	-	256094	-
0 - 10,000 psi	256071	-	256095	-

* Metric and dual scale dials are available. Please call Customer Service at (863) 534-1504 for more information.



Process Gauges

Model 656 Open Front Stainless Steel Pressure Gauges

SPEC NUMBER SELECTION CHART

Model 656 (100 mm)	STEM MOUNTING Low Mount				FRONT FLANGE PANEL MOUNTING Low Back Mount	
	6566 Low Mount, 1/4-18 NPT		6566 Low Mount, 1/2-14 NPT		6566 Lower-Back Mount, 1/4-18 NPT	
Bourdon Tube	316L Stainless Steel		316L Stainless Steel		316L Stainless Steel	
Connection	316L Stainless Steel		316L Stainless Steel		316L Stainless Steel	
Range*	Spec No.	Part No.	Spec No.	Part No.	Spec No.	Part No.
0-30" Hg VAC	356000	-	356025	-	356050	-
30"- 0-15 psi	356001	-	356026	-	356051	-
30"- 0-30 psi	356002	-	356027	-	356052	-
30"- 0-60 psi	356003	-	356028	-	356053	-
30"- 0-100 psi	356004	-	356029	-	356054	-
30"- 0-150 psi	356005	-	356030	-	356055	-
0-15 psi	356007	-	356032	-	356057	-
0 -30 psi	356008	-	356033	-	356058	-
0 -60 psi	356009	-	356034	-	356059	-
0 -100 psi	356010	-	356035	-	356060	-
0 -160 psi	356011	-	356036	-	356061	-
0 -200 psi	356012	-	356037	-	356062	-
0 -300 psi	356013	-	356038	-	356063	-
0 -400 psi	356014	-	356039	-	356064	-
0 -600 psi	356015	-	356040	-	356065	-
0 -800 psi	356016	-	356041	-	356066	-
0 -1000 psi	356017	-	356042	-	356067	-
0 -1500 psi	356018	-	356043	-	356068	-
0 -2000 psi	356019	-	356044	-	356069	-
0 -3000 psi	356020	-	356045	-	356070	-
0 -6000 psi	356021	-	356046	-	356071	-
0 -10,000 psi	356022	-	356047	-	356072	-
0 -14,500 psi	356023	-	356048	-	356073	-
0 -23,000 psi	356024	-	356049	-	356074	-

* Metric and dual scale dials are available. Please call Customer Service at (863) 534-1504 for more information.



Process Gauges

Model 656 Open Front Stainless Steel Pressure Gauges

ORDERING INFORMATION

Model 656

NOMINAL DIAMETER _____	-6
2 = 63 mm	
6 = 100 mm	
RANGE Refer to Pressure Range Table (see page A28) _____	-44
UNITS OF MEASURE _____	-A
A = psi	
B = psi/bar	
C = psi/kPa	
D = bar	
E = kPa	
F = kg/cm ²	
G = psi/kgcm ²	
H = MPa	
MOUNTING TYPE (Refer to Mounting Type and Dimension) _____	-A
A = Low mount	
F = Center-back mount (63 mm only)	
N = Lower-back mount, front flange	
T = Lower-back mount, U-clamp (63 mm only)	
ACCURACY _____	-3
3 = 1.0 (100 mm)	
4 = 1.6 (63 mm)	
CONNECTION _____	-E
C = 1/4 inch (63 mm)	
E = 1/2 inch (100 mm)	
CONNECTION TYPE _____	-D
D = NPT	
(Contact factory for other connections)	
PRESSURE CONNECTION MATERIAL AND BOURDON TUBE _____	-3
3 = 316L stainless steel	
FILL FLUID _____	-A
A = No fill	
G = Glycerine	
M = Mineral oil	
S = Silicone DC-200	
OPTIONS* _____	-00
00 = No options	
CL = Oxygen cleaned	
SR = Shatter-resistant glass window (63 mm only)	

TRANSCAT[®]
[Visit us at Transcat.com!](http://www.transcat.com)

35 Vantage Point Drive // Rochester, NY 14624 // Call 1.800.800.5001

Example:
656-6-44-A-A-3-E-D-3-00

Model 656 100 mm diameter, 0-1,000 psi scale, low mount, 1.0% accuracy, 1/2 inch connection, NPT type connection, 316L stainless steel, with no fill, no options