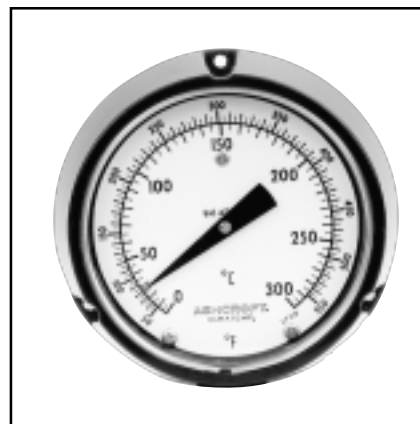


- **Exclusive movementless design resists shock and vibration – no gears to wear or misalign resulting in increased instrument life**
- **Gas-operated molecular sieve**
- **No elevation error**
- **Mercury free**
- **One bulb size for all ranges**
- **1% full-span accuracy**
- **Maxivision[®] dial**
- **Readily available – two to three weeks delivery**
- **Limited five-year warranty**

The phenolic case construction is ideal for most ambient conditions. Flush or surface mounting. Snap ring permits pointer adjustment. Available in 4½", 6", and 8½" sizes.



SELECTION TABLE

600A — 04		C03						B01		A1		L07		AK	
Table 1		Table 2						Table 3		Table 4		Table 5		Table 6	
CASE STYLE		CASE SIZE		MOUNTING				BULB STYLES*		ARMOR STYLE		LINE LENGTH		RANGES	
CODE	DESCRIPTION	CODE	SIZE	MOUNTING		CONNECTION		CODE	DESCRIPTION	CODE	DESCRIPTION	CODE	LINE LENGTH	CODE	SINGLE RANGES
				SURFACE	FLUSH	LOWER	REAR								
600A	PHENOLIC SNAP RING	C03	4½"	✓		✓		B01	12" Bendable extension with ½ NPT union connection	A1	Stainless Steel Spring	L01	5'	AB	-320/200°F
		C08	4½"	✓			✓	B03	Plain bulb with rigid extension, no union			L03	10'	AE	-100/100°F
		C38	4½"		✓		✓	B08	Plain bulb with rigid extension, ½ NPT union on armor			L07	20'	AG	-40/180°F
		C16	6"	✓		✓		B17	18" Bendable extension with ½ NPT union connection			L09	30'	AK	20/240°F
		C22	6"	✓			✓	B18	24" Bendable extension with ½ NPT union connection			L13	50'	AL	50/300°F
		C42	6"		✓		✓					L19	80'	AN	50/550°F
		C31	8½"	✓		✓								AR	50/750°F
		C33	8½"	✓										AT	400/1200°F
		C45	8½"		✓			✓						AY	-200/100°C
													BN	-40/80°C	
													BS	0/120°C	
													BT	10/150°C	
													BU	0/300°C	
													BW	0/400°C	
													BJ	200/650°C	
														DUAL RANGES	
														CE	20/240°F
														CF	0/120°C
														DR	50/550°F
														DT	0/300°C
															50/300°F
															10/150°C
															-40/180°F
															-40/80°C

*Minimum recommended insertion length ("u" dimension) in liquids is 4 inches and in gases is 6 inches for standard ¾" x 3" bulb

TO ORDER THIS DURATEMP 600A-04 THERMOMETER:

Select:

1. Case Style: Phenolic Snap Ring _____ Table 1 _____

2. Case Size & Mounting: 4½" Surface, Lower _____ Table 2 _____

3. Bulb Style: 12" Bendable Extension with Union Connection _____ Table 3 _____

4. Armor Style: Stainless Steel Spring _____ Table 4 _____

5. Line Length: 20 feet _____ Table 5 _____

6. Temperature Range: 20/240°F _____ Table 6 _____

7. Options: Stainless Steel Tag _____ (See Page 133) _____