

## Type 3005/3005P Metric Case Commercial Gauge



### FEATURES

- 304 stainless steel case liquid-filled, dry or field-fillable (Type 3005)
- ABS case, liquid-filled, dry or field-fillable (Type 3005P)
- Patented PowerFlex™ movement with polyester segment
- Pressure ranges from vacuum to 15,000 psi and compound
- Two-year warranty on liquid-filled gauges
- True Zero™ indication, a unique safety feature

Ashcroft® Type 3005/3005P gauges are an exceptional value. The materials, construction, and design of these gauges provide a product of superior quality, able to withstand the rigors of pressure spikes, mechanical shock and high vibration levels.

These gauges offer flexibility in fit and function. Type 3005 gauges are 63mm in diameter and available in lower or back connection. Type 3005P are also 63mm and available in ¼ NPT lower connection only. These gauges can be purchased either dry, liquid filled or field fillable. Back connection Type 3005 gauges can be panel mounted with a variety of optional panel mounting kits. Metric socket configurations and metric dials are also available.

As with other Ashcroft commercial gauges, both the Type 3005 and 3005P incorporate the patented PowerFlex™ movement, a proven performer, offering superior resistance to shock, vibration and pulsation. The result is a more durable, longer-lasting gauge.

True Zero™ indication, a standard feature on these gauges, is the accurate indication of zero pressure being applied to the gauge. In addition to increased safety benefits, this means reduced inspection and manufacturing cost for you and your customer.

### PRODUCT SPECIFICATIONS

Ashcroft® Model No.: 3005/3005P

- Size:** 63mm (2½")
- Case:** 3005 – 304 stainless steel, dry or liquid filled  
3005P – Black ABS, dry or liquid filled
- Fill Fluid:** Glycerin (20° to 150°F ambient; –7°C to 65°C)
- Ring:** None
- Window:** Polycarbonate with O-ring seal
- Dial:** Black figures on white background, aluminum
- Pointer:** Black, aluminum
- Bourdon Tube:** – C-shaped bronze (vac.-600 psi and compound)  
– Helical bronze (1000 psi-6000 psi)  
– Helical stainless steel (10,000 psi-15,000 psi)
- Movement:** Patented PowerFlex™ movement
- Socket:** Brass, with O-ring case seal
- Restrictor:** Brass throttle plug, 0.013" orifice (no throttle plug in vacuum or 15 psi ranges)
- Connection:** 3005 – ¼ NPT lower and back  
3005P – ¼ NPT lower only
- Ranges:** Vac thru 15,000 psi and compound. Equivalent metric ranges available
- Accuracy:** ASME B40.100, Grade B, ±3-2-3%
- Operating Temp.:** –40°F to 150°F (dry gauge)  
–40°C to 65°C

### OPTIONAL FEATURES

- Case:** Sealed case, field fillable (LJ)  
Silicone filled (GV)  
(–40°F to 150°F; –40°C to 65°C)
- Movement:** FlutterGuard™
- Mounting Hardware:** U-clamp (UC), front flange (FF), retrofit flange (RF) – back connect only
- Socket:** Throttle Plugs, 0.007", 0.020", 0.063"  
JIS, DIN and other connections on application
- Others:** Customized dials  
Nonstandard ranges  
Special calibration on application

### COMMONLY USED ON

Hydraulic systems, machine tools, pressure washers/sprayers, compressors, irrigation equipment, a variety of other applications

### HOW TO ORDER (Typical example)

Dial Size: 63mm \_\_\_\_\_ **63**

Movement: Patented PowerFlex™ \_\_\_\_\_ **W**

Case Type Number: 3005 (Stainless Steel) \_\_\_\_\_ **3005**

Socket Material: Brass \_\_\_\_\_ **H**

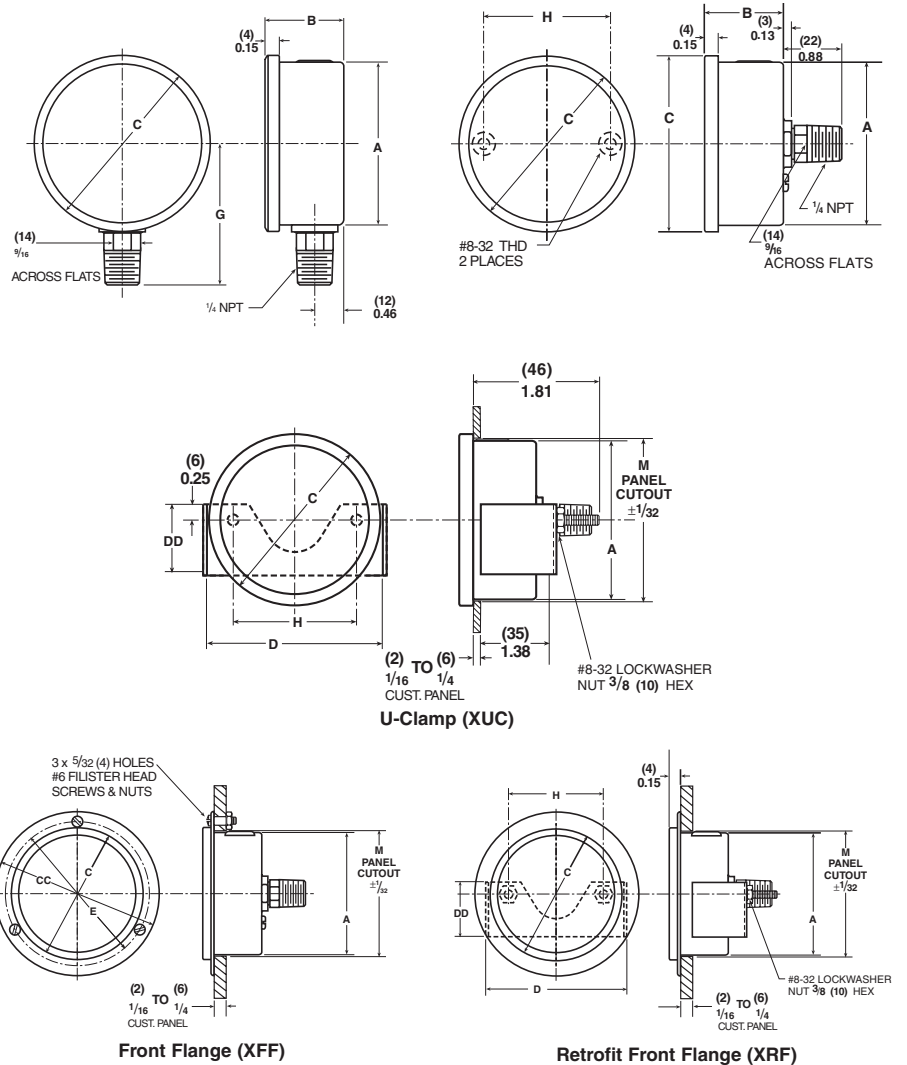
Liquid Filled Case: \_\_\_\_\_ **L**

Connection Size/Location: ¼ NPT Lower \_\_\_\_\_ **02L**

Range: 1000 psi \_\_\_\_\_ **1000#**

# Type 3005/3005P Metric Case Commercial Gauge

## DIMENSIONS



Size/Type	A	B	C	CC	D	DD	E	G	H	M
63mm, 3005	(63) 2.48	(29) 1.16	(68) 2.67	(86) 3.36	(75) 2.95	(28) 1.12	(75) 2.95	(56) 2.20	(49) 1.94	(65) 2.54
63mm, 3005P*	(64) 2.53	(31) 1.22	(68) 2.67	—	—	—	—	(56) 2.20	—	—

\*Lower connect only

Dimensions in (mm) inches.

**TRANSCAT**

▶ Visit us at [Transcat.com!](http://Transcat.com!)

35 Vantage Point Drive // Rochester, NY 14624 // Call 1.800.800.5001

**ISO 9001**  
REGISTERED FIRM

BULLETIN CG-35

All specifications are subject to change without notice.  
All sales subject to standard terms and conditions.  
© Ashcroft Inc. 2007 BP3M7/07