



**TRANSCAT**

▶ Visit us at [Transcat.com!](http://Transcat.com!)

35 Vantage Point Drive // Rochester, NY 14624 // Call 1.800.800.5001

# Model 20DAX40 Manometer

The Model 20DAX40 manometer is designed for the measurement of pressures, vacuums or differential pressures with a maximum operating pressure of 400 PSI.

This manometer is of very rigid construction designed primarily for high line pressure operation. Only carefully selected, fully annealed glass tubing is used. The manometer scale is located to permit quick and accurate reading of the indicating columns.

The U-tube type manometer is a primary basic standard of pressure measurement. Pressure measurements are accomplished by balancing a vertical head of indicating fluid with the pressure to be measured. As there are no cams, gears or levers to operate in the manometer the readings obtained are accurate.

## Model 20DAX40 Construction

The manometer body has an aluminum channel to which stainless steel and blocks are connected. The wetted parts are type 304SS.

The glass tubing is gland packed with viton gaskets at each end block and is supported at spaced intervals to prevent tube distortion at elevated pressures. In place of the conventional U-tube of one continuous glass length, two straight length individual tubes are used in this manometer. To connect the two vertical glass tube legs to form the U, the lower manometer end block is cross-drilled.

The manometer scale is furnished with a white, non-glare satin background with black graduations and characters. The scale is adjustable for zero indicating fluid.

A transport cover seals the unit from dust and moisture and affords protection to the operator should excessive pressures cause an indicating tube to fracture.

Standard pressure connections are ¼ inch female pipe out the top of the upper end block. A drain plug out the bottom of the lower end block permits draining of the manometer indicating fluid and cleaning of the glass indicating tubes. The instrument finish is a durable textured, black urethane.

## Fluid Requirements per Tube & Instrument Weight

<b>Range</b>	10	20	30	40	60	80	100
<b>Mercury lbs.</b>	1	1	2	2	2	3	3
<b>295 Fluid lbs.</b>	.25	.25	.5	.5	.5	.75	.75
<b>Fl. Oz.</b>	1	1	2	2	2	4	4
<b>Weight lbs.</b>	5	6	10	12	15	18	22

# Model 20DAX40

## Manometer

### Specifications

#### Scales

- A – Linear inches and tenths
- B – Inches water pressure using mercury
- C – Pounds and tenths using mercury (PSI)
- F – Linear centimeters and millimeters
- G – Inches and tenths of water pressure using Meriam 827 Red Oil
- H – Inches and tenths of water pressure using Meriam 175 Blue Fluid
- I – Inches and fifths of water pressure using Meriam 295 Red Fluid

Fluids	Nominal Sp. Gr.
Meriam 1000 Green Concentrate	1.000
Meriam 827 Red Oil	0.827
Meriam 100 Red Unity Oil	1.00
Meriam 295 Red Fluid	2.95

### Dimensions Table

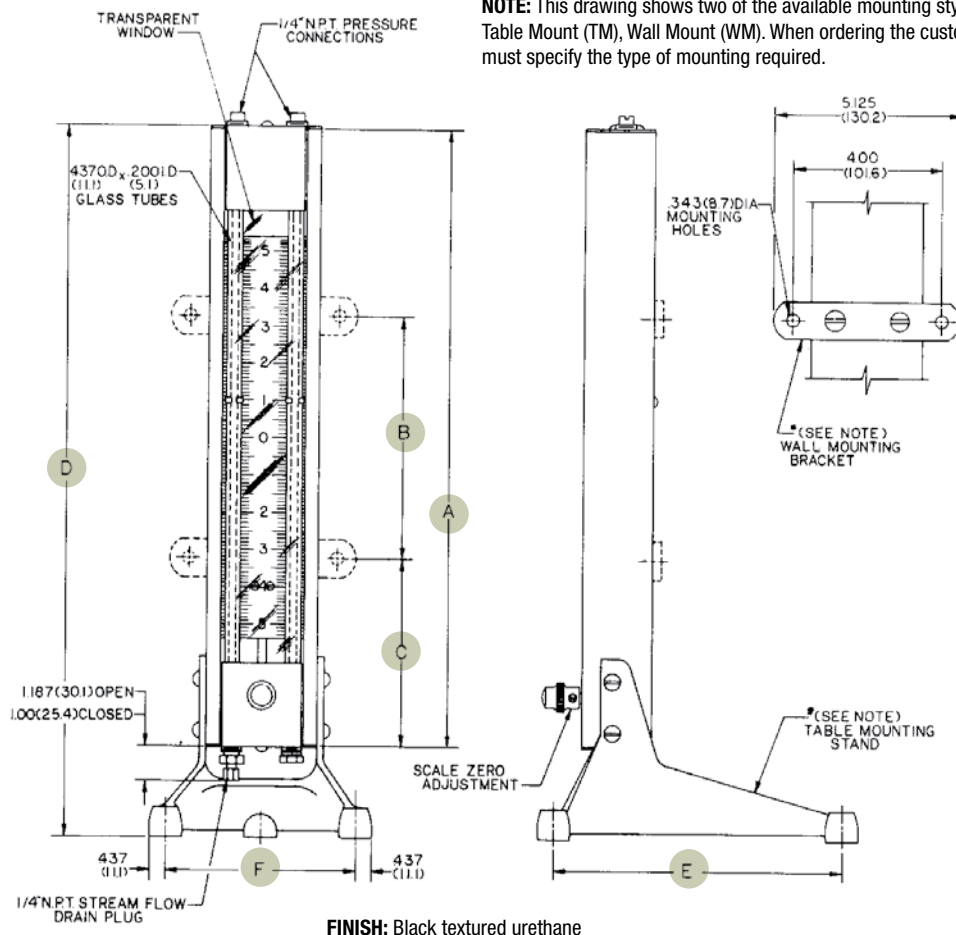
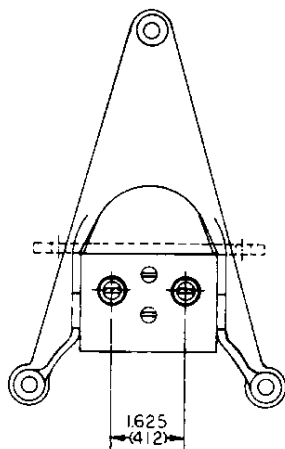
Range	A	B	C	D	E	F
10"	16.50 (419.1)	6.50 (165.1)	5.00 (127.0)	19.00 (482.6)	7.75 (196.9)	5.125 (130.2)
20"	26.50 (673.1)	10.50 (266.7)	8.00 (203.2)	29.00 (736.6)	7.75 (196.9)	5.125 (130.2)
30"	36.50 (927.1)	20.50 (520.7)	8.00 (203.2)	39.00 (990.6)	7.75 (196.9)	5.125 (130.2)
40"	46.50 (118.1)	30.50 (774.7)	8.00 (203.2)	49.00 (1224.6)	12.00 (304.8)	8.00 (203.2)
60"	60.50 (1689.1)	50.50 (1282.7)	8.00 (203.2)	69.00 (1752.6)	12.00 (304.8)	8.00 (203.2)
80"	86.50 (2197.1)	70.50 (1790.7)	8.00 (203.2)	89.00 (2260.6)	12.00 (304.8)	8.00 (203.2)
100"	106.50 (2705.1)	90.50 (2298.7)	8.00 (203.2)	109.00 (2768.0)	12.00 (304.8)	8.00 (203.2)

NOTE: All numbers in parentheses are in millimeters.

### Ordering Information

To order Meriam's 20DAX40 manometer custom-made to your specifications contact your Meriam sales represent the following information:

- Head Material
- Range
- Required Scale



NOTE: This drawing shows two of the available mounting styles: Table Mount (TM), Wall Mount (WM). When ordering the customer must specify the type of mounting required.

FINISH: Black textured urethane