

**weber**  
**flow-captor**

**TRANSCAT**

35 Vantage Point Drive  
Rochester, NY 14624  
1.800.800.5001

▶ Visit us at [Transcat.com!](http://Transcat.com!)



- Compact electronic unit with no moving parts
- No adjustment or calibration needed
- Maintenance free
- Fail Safe Normally Open switch
- Economical Protection even for the most critical cooling systems
- Designed with the OEM in mind



## flow-captor CoolGuard

The flow-captor CoolGuard utilizes the weber pioneered calorimetric principle and the unique “*therm-o-sense*” circuitry that monitors the cooling effect and temperature of the cooling media instead of just the flow.

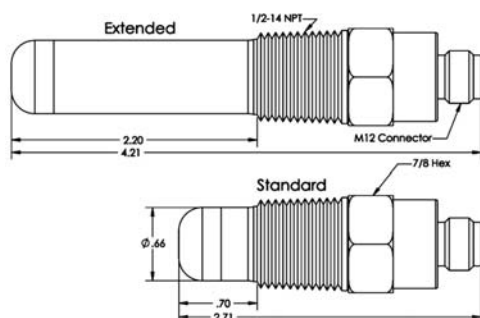
When the cooling power of your system goes down, the temperature goes up, or flow is lost...CoolGuard comes into action...you can depend on it!

CoolGuard is especially designed, for all types of cooling systems, as a reliable alternative to failure prone mechanical flow switches.

### Technical Data

Type	4000
Medium	Water-based solutions

### Dimensions



### Part Number:

XX= Temp Setpoint (50°C or 70°C)  
Y=Flow Rate Setpoint (meter/sec)  
Z=Housing (none or EXT)

**4100-XX-Y-Z**

# flow-captor

CoolGuard

Preliminary datasheet



The flow-captor CoolGuard utilizes the weber pioneered calorimetric principle and the unique “*therm-o-sense*” circuitry that monitors the cooling effect and temperature of the cooling media instead of just the flow.

When the cooling power of your system goes down, the temperature goes up, or flow is lost... **CoolGuard** comes into action... you can depend on it!

**CoolGuard** is especially designed for all types of cooling systems, as a reliable alternative to failure prone mechanical flow switches.

## Sensor Data

Low Flow Set Point	0.3 m/s (.9 fps) fixed
Hi Temp Set Point	158 Deg. F ( 70 Deg. C) fixed (other settings available)
Medium Temperature	-20 to + 176 °F (-4 °C to + 80 °C)
Response Time	2 - 10 seconds
Repeatability	< 0.5 %
Hysteresis	Approx. 20% of setpoint value
Pressure	Up to 150 PSI

## Mechanical Data

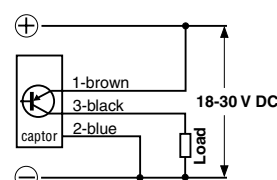
Protection Class	IP 65 (NEMA4)
Housing Material	303 Stainless Steel
Thread	1 / 2 “-14 MNPT
Connection	Integrated plug assembly with M12 connector

## Electrical Data

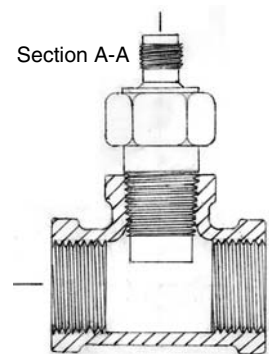
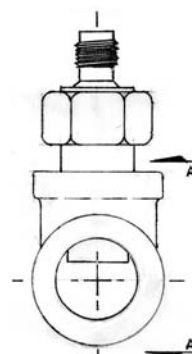
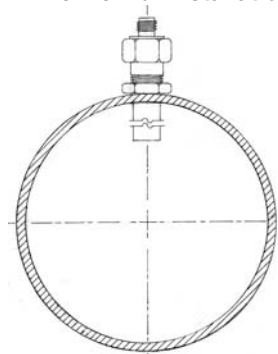
Operating voltage	18-30 VDC
Switching Current	200mA max.
Power Consumption	4 W max.
Initial Operation	15 seconds (status “no flow” during initiation)
Electrical Output	PNP n.o. (switch closed with flow)

## Connection Diagram:

## PNP-transistor output



## Inline view of installation



Note that not all products are suitable for all applications. Various conditions may effect product performance. If in doubt, contact factory for details.

**TRANSCAT**

▶ Visit us at [Transcat.com!](http://Transcat.com!)

35 Vantage Point Drive // Rochester, NY 14624 // Call 1.800.800.5001