

Fluke 700G Series

Precision Pressure Test Gauges

Technical Data



Features

- Precision pressure measurement from 15 psi/1 bar to 10,000 psi/690 bar
- Accuracy to 0.05 % of full scale
- Easy to use, rugged construction for reliable performance
- CSA; Class 1, Div 2, Groups A-D rating
- ATEX: rating: II 3 G Ex nA IIB T6
- Combine with the 700PTPK or 700HTPK pump kits for a complete pressure testing solution for up to 600 psi with the PTP-1 pneumatic pump and up to 10,000 psi with the HTP-2 hydraulic pump
- Log up to 8493 pressure measurements to memory (requires 700G/TRACK software)
- Three-year warranty



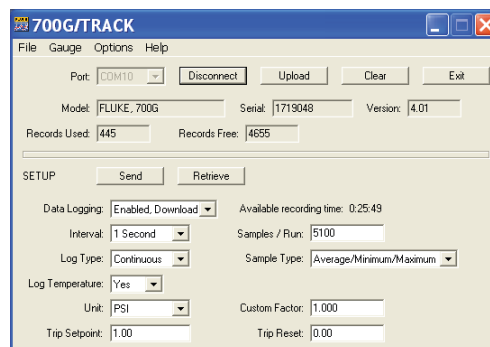
Fluke-700PTPK Pneumatic Test Kit

- Combine with any Fluke-700G Series Gauge, 1,000 psi or less, to make a complete pressure testing kit
- Generate pressure up to 600 psi, 40 bar with the 700PTP-1 test pump.
- Connect the 700G Series gauge directly to the included PTP-1 hand pump
- Includes hoses and adapters for connecting to the pressure device to be tested
- Hard case protects pump and gauge and allows gauge to remain connected to the pump



Fluke-700HTPK Hydraulic Test Kit

- Combine with any Fluke-700G Series Gauge, 1,000 psi range or greater, to make a complete pressure testing kit
- Generate pressure up to 10,000 psi, 690 bar with the included 700HTP-2 test pump
- Connect the 700G Series gauge directly to the HTP-2 hand pump
- Includes 700HTH-1 hose kit and adapters for connecting to the pressure device to be tested
- Hard case protects pump and gauge and allows gauge to remain connected to the pump



700G/TRACK Logging Software

- Use with 700G Series gauges to perform real time data logging to a PC
- Download logging configurations to the 700G Series gauges for a remote logging event
- Configure logging event reading rate, duration and measurement units
- Upload measurements logged remotely and display or export measurements
- Includes communication cable for connection to a PC

Specifications

Model	Range	Resolution	Accuracy	Burst Pressure
700G04	-14 psi to 15 psi -.97 bar to 1 bar	0.001 psi 0.0001 bar	Positive pressure ± 0.05 % FS	500 psi 34 bar
700G05	-14 psi to 30 psi -.97 bar to 2 bar	0.001 psi 0.0001 bar		500 psi 34 bar
700G06	-12 psi to 100 psi -.83 bar to 6.9 bar	0.01 psi 0.0001 bar		1000 psi 69 bar
700G27	-12 psi to 300 psi -.83 bar to 20 bar	0.01 psi 0.001 bar		2000 psi 138 bar
700G07	-12 psi to 500 psi -.83 bar to 34 bar	0.01 psi 0.001 bar	Vacuum ± 0.1 % FS	2000 psi 138 bar
700G08	-14 psi to 1000 psi -.97 bar to 69 bar	0.1 psi 0.001 bar		10000 psi 690 bar
700G29	-14 psi to 3000 psi -.97 bar to 200 bar	0.1 psi 0.01 bar		10000 psi 690 bar
700G30	-14 psi to 5000 psi -.97 bar to 340 bar	0.1 psi 0.01 bar		10000 psi 690 bar
700G31	-14 psi to 10000 psi -.97 bar to 690 bar	1 psi 0.01 bar		15000 psi 1035 bar

Temperature compensation: 15 °C to 35 °C (59 °F to 95 °F) to rated accuracy
For temperatures from -10 °C to 15 °C and 35 °C to 55 °C, add .003 % FS/°C

Media compatibility

- 15, 30 psi: any clean dry non-corrosive gas
- 100, 300, 1000 psi: any liquids or gases compatible with 316 stainless steel and start above 1000 psi :any non-flammable, non-toxic, non-explosive, non-oxidizing liquid or gas compatible with 316 stainless steel.

Mechanical specifications

Dimensions (HxWxD)	12.7 cm x 11.4 cm x 3.7 cm (5 in x 4.5 in x 1.5 in)
Pressure connection	¼ in NPT Male
Housing/Weight	Cast ZNAl/0.56 kg (1.22 lb) with holster
Display	5-1/2 digits, 16.53 mm (0.65 in) high 20-segment bar graph, 0 to 100 %
Power	Three AA alkaline batteries
Battery life	1,500 hours without backlight (continuous on), 2,000 hours at slow sample rate

Ordering information

Model

FLUKE-700G04 Pressure Gauge, 15 PSIG
FLUKE-700G05 Pressure Gauge, 30 PSIG
FLUKE-700G06 Pressure Gauge, 100 PSIG
FLUKE-700G27 Pressure Gauge, 300 PSIG
FLUKE-700G07 Pressure Gauge, 500 PSIG
FLUKE-700G08 Pressure Gauge, 1,000 PSIG
FLUKE-700G29 Pressure Gauge, 3,000 PSIG
FLUKE-700G30 Pressure Gauge, 5,000 PSIG
FLUKE-700G31 Pressure Gauge, 10,000 PSIG
700G/TRACK Data logging software and cable
FLUKE-700PTPK Pneumatic test pump kit, 0 TO 600 PSI/40 BAR
FLUKE-700HTPK Hydraulic test pump kit, 0 TO 10,000 PSI/690 BAR

Included accessories (Gauges)

Manual on CD-ROM in 14 languages
 NIST traceable certificate of calibration
 1/4" NPT to 1/4" ISO adapter

Fluke. Keeping your world
up and running.®

TRANSCAT®

▶ Visit us at Transcat.com!

35 Vantage Point Drive Rochester, NY 14624
 Call 1.800.800.5001

©2011 Fluke Corporation.
 Specifications subject to change without notice.
 Printed in U.S.A. 11/2011 4131179A D-EN-N

Modification of this document is not permitted
 without written permission from Fluke Corporation.