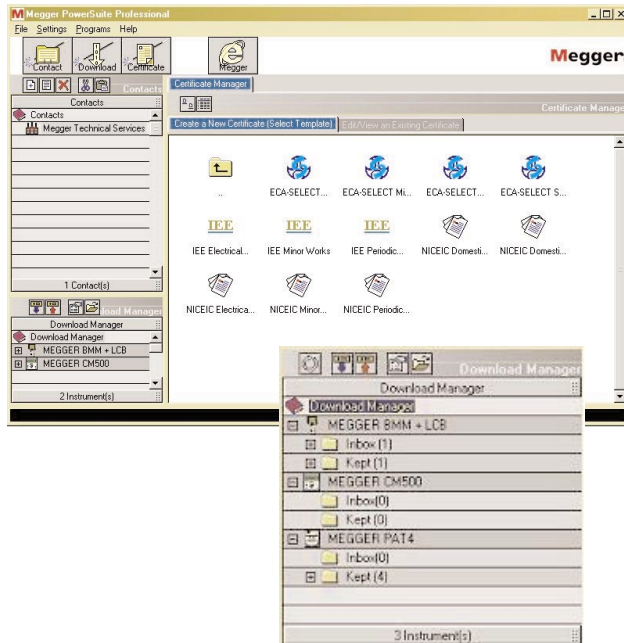


# Powersuite Pro-LITE

## Electrical test and PAT software



- **Electrical certification software**
- **Easy, fast and flexible**
- **Work in real certificates and forms**
- **Download results from Megger testers**
- **Print on plain paper or Pre-printed stationary**
- **The essential NICEIC, ECA-Select certification supported**
- **Client manager to organise your customers**

### DESCRIPTION

Whether you complete electrical test forms by hand or use downloading test equipment, the pain of completing forms can be dramatically reduced by using a software package, and printing your documents. Results are much quicker, carry fewer errors associated with hand writing, and are professional in appearance.

Powersuite Professional is the next generation of Megger software replacing the existing Megger Powersuite packages, designed for the management of test results from electrical testing and PAT testing, including client management, automatic form filling and printing.

Pro-Lite PAT and Pro-Lite 16th are the simplest packages in the Professional range and offer the ideal solution as a cost effective entry into electrical test software, essential for managing electrical and PAT test results, with the guarantee that the package can be upgraded as your requirements expand.

### Advantages

The overall layout and operation of Powersuite Professional has been completely revised from the original Powersuite software, providing familiarity to existing software but far more flexibility and faster application as a result of:

- Working in real form layouts, not spreadsheets.
  - Now data is entered directly on a form, not in a spread sheet.
- High quality results
  - Printed forms are easy to read with no ambiguous writing or mistakes, and look professional.
- Wizard driven operations, toolbars and drop-down menus
  - Greater flexibility and productivity, while reducing training times.
- Client and location manager
  - Keeps your customer details and locations for simple importing to certificates
- Download test results or direct data entry to certificates
  - Import data from a Megger test instrument or use as a form filler
- Simplified download data management
  - With a built-in download manager window, downloads can be saved until ready to import to the required certificate. All downloads are date and time stamped to prevent overwriting.
- Easy certificate generation.
  - Simply click the Certificate Wizard to create completed or blank certificates
- Customise certificates
  - Company Logo import facility to personalise the look of your forms.
- Visibility of Clients, download files, assets and results without the need to switch software modules.
  - Data held in separate windows and can be moved as required

**Pro-LITE PAT - for portable appliance testing**

Ideal for the Portable appliance testing engineer, Powersuite Pro-Lite for PAT testing provides the perfect solution to producing test documentation.

The large number for tests performed daily in portable appliance testing generates a great deal of paperwork. Hand completed test results are time consuming and prone to errors. The perfect solution is the testing of appliances on a tester capable of logging all the instrument details and test results, and downloading them to a PC running Megger Powersuite Pro-Lite for PATs. This information is imported directly into a certificate which can be printed and delivered to the customer.

Alternatively Powersuite ProLite PAT software can be used as a form filler, displaying a blank form that can be completed as appliances are tested manually, and the results then printed.

The Pro-Lite PAT package accepts test data from all the Megger Portable Appliance Testers that have the facility to store test results. These results are downloaded to a computer from which the user can produce high quality certificates with their own company logo from a selection of Megger form templates.

**Advantages of Pro-Lite PAT**

- Simple wizard operations – quick to learn and use
- Download test results directly to certificates – no complicated file handling
- Report 'front page' generation – automatically creates a certificate front page with both client and location details
- Certificate manager – provides a range of certificate formats
- Contact manager – keeps details of all your clients and all certificates are stored under the relevant client
- Download manager – provides direct access to downloading instruments and raw data prior to importing into a certificate
- Fully upgradeable to all Powersuite Professional standard packages

**Pro-Lite 16th - for electrical installation testing**

Powersuite Pro-Lite 16th is designed specifically for the electrical test engineer working on electrical installations.

Simply add the clients' details in the contacts manager, open a certificate and enter the relevant test results. Test certificates can be printed directly or saved under the clients' details for future reference.

Pro-Lite 16th is ideal as an on-site form-filling package, entering test results as site testing progresses, but will also accept result from Megger downloading electrical testing instruments, such as the CM500, BMM2500 and LCB2500.

Certificate templates are available for Minor works, periodic inspection, domestic installation and electrical installation, supporting the computer friendly NICEIC forms, the ECA-Select and Megger forms.

**Advantages of Pro-Lite 16th**

- Ideal for the new Part P building regulations to be implemented in 2004
- Certificates are displayed on screen – no complicated looking spreadsheets
- Accepts data from all Megger downloading electrical test instruments
- Supplied with the essential forms required for electrical testing
- NICEIC, ECA and IEE certificate formats supported
- Can be used as remote (Field) software for other Powersuite Professional packages

**Powersuite Pro-Lite PAT****Forms shipped with each software package:**

Shipped with 4 standard PAT certificates:

COMPACT PAT test certificate

LANDSCAPE PAT test certificate

MULTILINE PAT test certificate

SINGLE PAGE PAT test certificate

**Powersuite Pro-Lite 16th**

Shipped with IEE, NICEIC AND ECA-Select certificates:

IEE Electrical Installation

IEE Minor Works

IEE Periodic Inspection

NICEIC Domestic Installation Certificate

NICEIC Domestic Periodic Inspection

NICEIC Electrical Installation Certificate

NICEIC Minor Works

NICEIC Periodic Inspection Report

ECA-SELECT Small Installations

ECA-SELECT Minor Works

ECA-SELECT Periodic Inspection

ECA-SELECT Electrical Installation

**Software support:**

Both Pro-Lite packages are supplied with 30 days telephone and email support.

Megger Ltd have a highly professional and skilled support team dedicated to support of our software. Further support is available in 12 monthly blocks, providing all the necessary support required to answer and aid in any application questions.

Both packages are seamlessly integrated into the Megger Professional testing software suite with simple upgrade paths to any of the other Professional packages.

**Recommended PC requirements:**

Processor: P3 400Mhz  
Memory: 64Mb  
Interface: RS232  
Display: 800 x 600 SVGA  
Hard disk: 50Mb

**ORDERING INFORMATION**

Item	Order Code	Item	Order Code
Pro-Lite PAT		Software support	
Portable Appliance testing	6111-694	Pro-Lite packs	
Pro-Lite 16th		30 days telephone and email software support	Free
Electrical installations	6111-695	Extended support	
		Additional 12 months software support	6111-705