

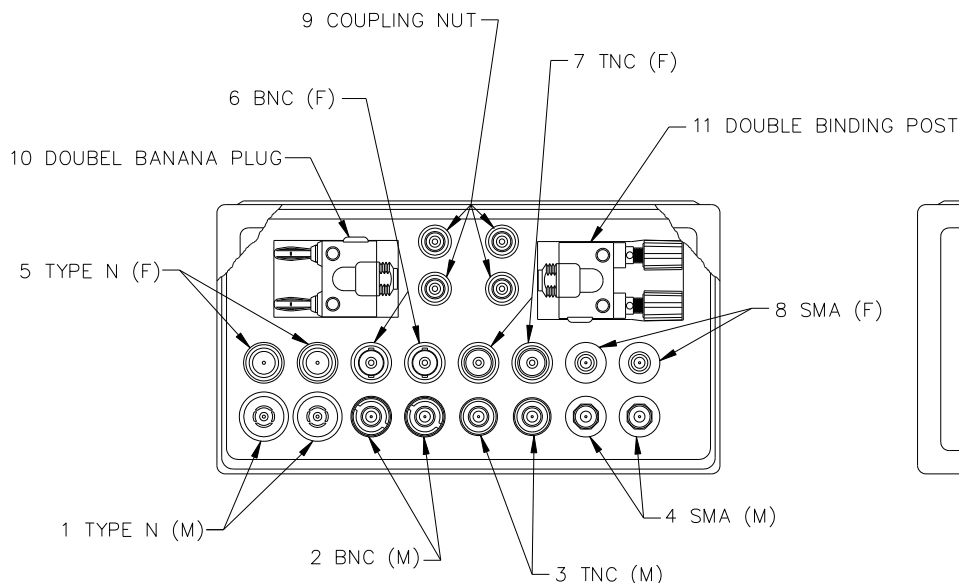
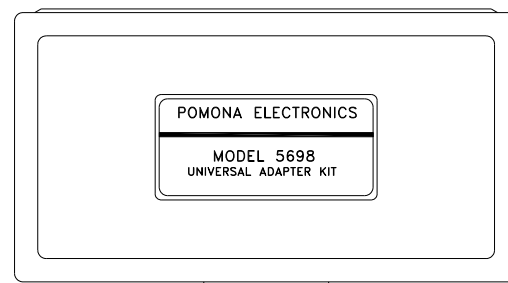
FEATURES:

Kit allows users to make their own adapters combinations, such as SMA to BNC or BNC to double banana plugs. Adapter's ends are joined with coupling nuts. Simply choose your combination. All connectors feature gold plated center contacts and silver plated bodies

TRANSCAT[®]

▶ Visit us at Transcat.com!

35 Vantage Point Drive Rochester, NY 14624
Call 1.800.800.5001



RATINGS:

Operating Temperature:

Items 1 through 9:

-67°F to +302°F (-55°C to +150°C).

Items 10 and 11:

+122°F (+50°C)

Nominal Impedance:

Items 1 through 9: 50 Ohms.

VSWR:

Items 1 through 9: 1.2:1 (DC-1GHz)

Frequency Range:

Items 1 through 9: DC-1GHz

Items 10 and 11: DC-300 MHz



Order Example: 5698
(Universal Adapter Kit)

All dimensions are in inches. Tolerances (except noted): .xx = ±.02" (.51 mm), .xxx = ±.005" (.127 mm).

All specifications are to the latest revisions. Specifications are subject to change without notice.

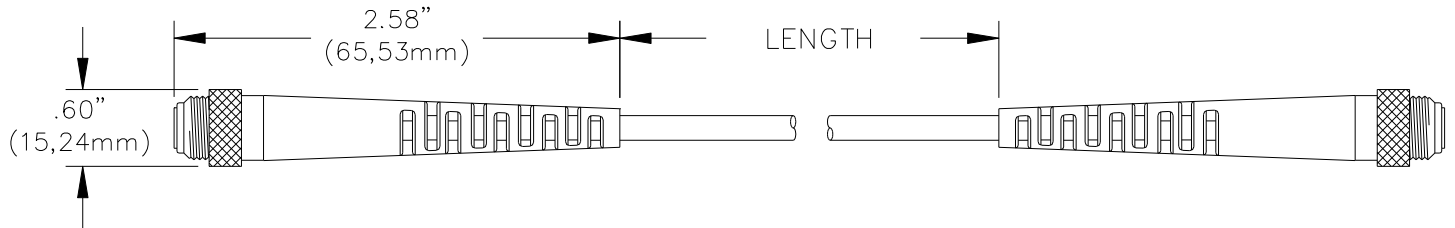
Registered trademarks are the property of their respective companies.

Item	Description	Model	Material
1	“N” male	5734	Center Contact: Gold Plated Brass, Dielectric: Teflon, Shell: Silver Plated Brass
2	BNC male	5735	Center Contact: Gold Plated Phosphor Bronze, Dielectric: Teflon, Shell: Silver Plated Brass
3	TNC male	5736	Center Contact: Gold Plated Phosphor Bronze, Dielectric: Teflon, Shell: Silver Plated Brass
4	SMA male	5737	Center Contact: Gold Plated Phosphor Bronze, Dielectric: Teflon, Shell: Silver Plated Brass
5	“N” female	5738	Center Contact: Gold Plated Phosphor Bronze, Dielectric: Teflon, Shell: Silver Plated Brass
6	BNC female	5739	Center Contact: Gold Plated Phosphor Bronze, Dielectric: Teflon, Shell: Silver Plated Brass
7	TNC female	5740	Center Contact: Gold Plated Phosphor Bronze, Dielectric: Teflon, Shell: Silver Plated Brass
8	SMA female	5741	Center Contact: Gold Plated Phosphor Bronze, Dielectric: Teflon, Shell: Silver Plated Brass
9	Coupler	5742	Center Contact: Gold Plated Phosphor Bronze, Dielectric: Teflon, Shell: Silver Plated Brass
10	Double Banana Plug	5743	Spring: Beryllium copper ASTM B194, alloy 172 cond. Ht. Plug Body: Brass per QQ-B-626, alloy 360, ½ hard. Finish: Nickel plated per QQ-N-290, class2, 200/300 microinches Insulation: ABS. Color: Black Center Contact: Gold plated brass Dielectric: Teflon Shell: Silver plated brass
11	Double Binding Post	5744	Body: Brass per QQ-B-626, alloy 360, ½ hard Finish: Nickel plated per QQ-N-290, class 2, 200/300 microinches Insulation: Polycarbonate. Color: one black, one red Insulation, Body: ABS. Color: Black Center Contact: Gold plated phosphor bronz Dielectric: Teflon Shell: Silver plated brass

All dimensions are in inches. Tolerances (except noted): .xx = ±.02" (.51 mm), .xxx = ± .005" (.127 mm).

All specifications are to the latest revisions. Specifications are subject to change without notice.

Registered trademarks are the property of their respective companies.



FEATURES:

- Universal Adapter Cable used with Pomona Universal Adapter Kits, models 5698 and 5748.

MATERIALS:

Coupler Shell (each end): Brass, Nickel Plated

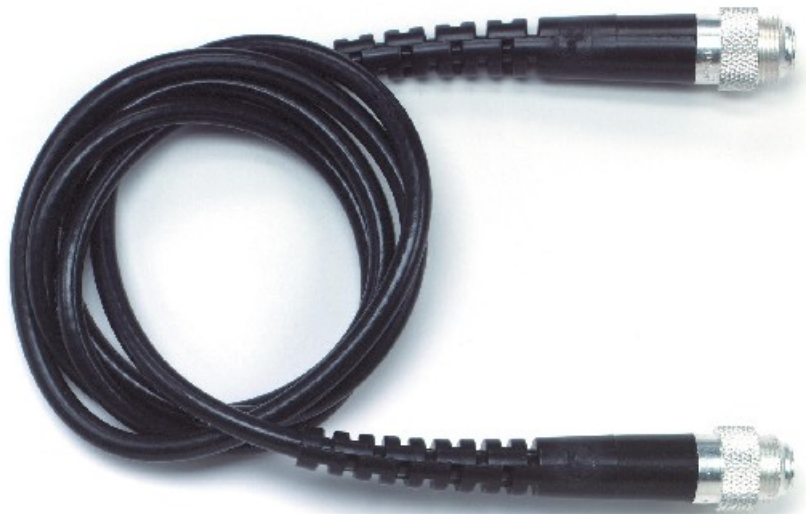
Coupler Conductor: Phosphor Bronze, Gold Plated

Strain Relief Boot: PVC Black

Cable: RG58C/U, O.D.: 0.195"

Frequency: DC – 1.2GHz.

Impedance: 50 Ohms



RATINGS:

Operating Voltage: Hands free usage in controlled voltage environments: 500 Vrms maximum. *For CE compliance:* not intended for hand-held use at voltages above 33 Vrms/70 Vdc.

Operating Temperature: +122°F (+50°C) Max.

ORDERING INFORMATION: Model 5749-**Length**

Length =: 24" (60,96cm), 36" (91,44cm), 48" (121,92cm), 60" (152,40cm) & 72" (182,88cm)

Order Example: 5749-48 (Cable ONLY, 48")

All dimensions are in inches. Tolerances (except noted): .xx = ±.02" (.51 mm), .xxx = ±.005" (.127 mm).

All specifications are to the latest revisions. Specifications are subject to change without notice.

Registered trademarks are the property of their respective companies.