



Series
424

Durablock® Inclined-Vertical Manometers

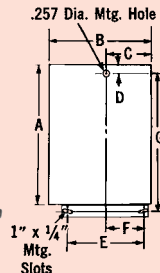
Accuracy To $\pm 1/4$ Of 1%

Ranges And Dimensions

Suitable for Total Pressure up to 100 psig, Temperatures up to 150°F



424-10 Inclined-Vertical
Manometer.



	Model	Inclined Range Inches of Water	Inclined Minor Div.	Length of Inclined Scale	Vertical Range Inches of Water	Vertical Minor Div.	Length of Vertical Scale	Dimensions							Weight lb-oz
								A	B	C	D	E	F	G	
Single Column	424-5	0-2.0	.01	20"	2.1- 5	.10	3-1/4"	10-1/2"	25-1/4"	12-5/8"	1"	10-1/2"	5-3/8"	10"	14-8
	424-10	0-2.0	.01	20"	2.1-10	.10	9"	16-1/2"	25-1/4"	12-5/8"	1"	10-1/2"	5-3/8"	16"	22-12
	421-5	0-1.0	.01	6-1/2"	1.1- 5	.10	4-5/8"	9-7/8"	9-5/8"	4-7/8"	5/8"	6-1/2"	3-1/4"	9-7/8"	4-12
	421-10	0-1.0	.01	6-1/2"	1.1 -10	.10	10-1/8"	15-1/2"	9-5/8"	4-7/8"	5/8"	6-1/2"	3-1/4"	15-1/2"	6-10
Double Column	421-23	0-2.2	.02	6-1/8"	2.4-23.0	.20	10-1/4"	15-1/2"	9-5/8"	4-7/8"	5/8"	6-1/2"	3-1/4"	15-1/2"	6-10
	422-5	0-1.0	.01	6-1/2"	1.1 -5	.10	4-5/8"	10-1/2"	11-1/2"	5-1/8"	5/8"	6-1/2"	3-1/4"	10-1/2"	6-10
	422-10	0-1.0	.01	6-1/2"	1.1-10	.10	10-1/8"	16-1/8"	11-1/2"	5-1/8"	5/8"	6-1/2"	3-1/4"	16-1/8"	10-13
	422-23	0-2.2	.02	6-1/8"	2.4-23.0	.20	10-1/4"	16-1/8"	11-1/2"	5-1/8"	5/8"	6-1/2"	3-1/4"	16-1/8"	10-12

*Single column metric-ranges and divisions in millimeters.

Dwyer® Model 424 inclined-vertical manometers are extremely accurate instruments designed and made especially for precision measurement of low differential pressures in laboratory and test applications. The inclined range bore has a length of 20" to provide ample multiplication of indicating fluid movement in this critical lower part of the range.

Series 420 Inclined-Vertical Manometers Accurate To $\pm 1\%$



Typical of Series 420 Inclined-Vertical Manometers is Model 422-10 double column manometer with a total range of 0 to 10" of water. Single column models are also furnished. Design features are essentially the same as for the Series 424. They are accurate to $\pm 1\%$ and are particularly suited for use with pitot tubes and in flow measurement or similar applications.

STANDARD ACCESSORIES

Include two 3/4 oz bottles of .826 red gage oil (1.91 blue gage oil for models 421-23 and 422-23), rapid shut-off type "a" connections, two 3 ft lengths of clear plastic tubing and two 1/8" NPT tubing adapters — two sets for double column models.

TRANSCAT®

▶ Visit us at Transcat.com!

35 Vantage Point Drive // Rochester, NY 14624 // Call 1.800.800.5001