



Compliance  
**Control**  
Cost Management  
Software by **TRANSCAT**



# The Next Generation of Asset Management Software



Assist you  
to remain in  
**compliance**  
with your  
quality system

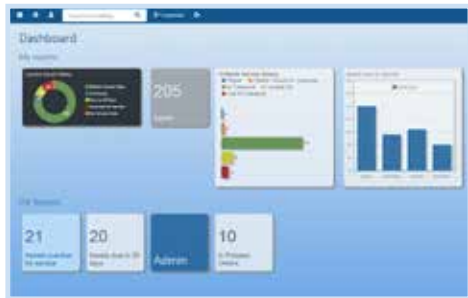
Simple and  
intuitive design  
helps you  
**control** and  
manage your  
assets

Helps reduce  
your operating  
**costs**, down time  
and maximizes  
asset investment

**CALIBRATED**  
BY TRANSCAT

# A truly industry unique and integrated asset tracking, quality control and cost management tool from **TRANSCAT®**

## Remain Compliant with Your Quality Systems



Custom Dashboard

- Validated to 21CFR Part 820.75 and 21CFR Part 11 to meet stringent FDA requirements
- Simple and intuitive design enhances user compliance to improve accuracy and reduce costs
- Allows easy access to all your calibration records including certificates, current instrument status, and much more

## Control and Manage Your Assets



Organization Hierarchy

- Next generation system of record to manage your calibrated and non-calibrated assets
- Automatically includes all assets calibrated by Transcat ... **plus:**
  - You can easily load all your other assets into the system
- Easy to create reports that are specific to each level of your organization
- Allows you to manage your assets at the user or site specific level helping you avoid unnecessary product purchases and transfers

## Helps Maximize Your Asset Investment



Custom Reporting

- Leverage the most current business intelligence tools to help you manage your business
- Fully integrated calibration system and automated push communications ensure:
  - All your instruments are calibrated on time and to your quality system's specifications
  - Your ability to better manage Out-of-Tolerance situations quickly, therefore, reducing downtime

800.828.1470

**CALIBRATED**  
BY TRANSCAT

[Transcat.com/c3](http://Transcat.com/c3)

For a demonstration or more information, contact your Transcat representative, or visit [Transcat.com/c3](http://Transcat.com/c3)